



Creating Opportunities

SINCE 1900



HONOLULU JAPANESE CHAMBER OF COMMERCE

FOSTERING FRIENDSHIPS • CONNECTING B2B • MĀLAMA KA ĀINA

125
HJCC

Leadership Programs History

July 1, 2025 - June 30, 2026

2454 S. Beretania Street, Suite 201
Honolulu, HI 96826

www.hjcc.org

 @HonoluluJapaneseChamber

 @hjcc808



HONOLULU JAPANESE CHAMBER OF COMMERCE MISSION STATEMENT

We are an organization founded for the promotion of business and economic growth in Hawaii based upon the principle, "Members Supporting Members"

The organization provides leadership and programs which promote membership interaction, resulting in growth and the continuation of its legacy.

We continue creating opportunities since 1900 to promote fostering friendships, connecting "B2B" (business-to-business), and mālama ka 'āina ('caring for the land').



A Message from the Chair



"This booklet will provide an overview of the organization's history, leadership, and the various programs available to its members. Its primary focus is on our members, and our programs and events are designed to add value to our membership, whether through networking events or seeking assistance from fellow members or member companies."

As the 2025-2026 Chairperson of the Honolulu Japanese Chamber of Commerce, I would like to express my commitment to the promotion of business and economic growth in Hawaii based upon the principle of Members Supporting Members.

This year is especially meaningful as we celebrate a truly remarkable milestone — the 125th Anniversary of the Honolulu Japanese Chamber of Commerce. For over a century, this organization has been a cornerstone of leadership, connection, and cultural preservation in our community. From humble beginnings to the influential organization we are today, the Chamber has stood as a testament to the resilience, vision, and collaborative spirit of Hawai'i's community.

Empowering Success, Inspiring Innovation

Our theme for the year ahead — **"Empowering Success, Inspiring Innovation"** — is more than a motto. It is a call to action.

Empowering Success means equipping our members, businesses, and future leaders with the tools, knowledge, and networks they need to thrive in a world that is rapidly evolving. Whether you're an entrepreneur starting out or a legacy business navigating change, we are here to champion your growth and celebrate your achievements.

Inspiring Innovation speaks to our heritage and our future. The Japanese-American community in Hawai'i has always been rooted in resilience, adaptability, and a spirit of collaboration. As we look forward, we must also be bold — to try new ideas, embrace emerging industries, and invest in the next generation of visionaries.

Together, we will continue to build bridges — between tradition and progress, between business and culture, and most importantly, between people.

Thank you, and let's move forward — empowered and inspired!

Derek Kaneshiro

Chair of the Board FY 2025-2026

*VP, ATM Product Manager
Central Pacific Bank*

Follow us!



Facebook
@HonoluluJapaneseChamber



Instagram
@HJCC808

Corporate Members

As of June 2025

Chairman's Circle

Central Pacific Bank
Island Insurance Co., Ltd.
Servco Pacific Inc.
Y. Hata & Co., Limited

President's Circle

ABC Stores
First Hawaiian Bank
Kyo-ya Management Company, Ltd.

Director's Circle

Hawaii Pacific Health
N&K CPAs, Inc.

Executive Circle

Accuity LLP
Edward Enterprises, Inc.
Finance Factors, Ltd.
HEI
JTB Hawaii, Inc.
Occidental Underwriters of Hawaii, Ltd.
Pacific Guardian Life Insurance Company, Ltd.

Corporate Circle

31AIKALIMA LLC
American Savings Bank
Atlas Insurance Agency
FCH Enterprises, Inc.
Hawaii Energy / Leidos
Hawaii National Bank
Kawailoa Development LLP
The SSA Group

Small Business Circle

Ace Auto Glass
AHL
Allied Builders Systems Inc.
Aloha Shoyu Company, Ltd.
ARC & Partner
Becker Communications, Inc.
Cetra Technology
ConnectWorks Group Hawaii
Dayforce

Join the HJCC!

Individual & Corporate Memberships
Available



Scan the QR code to learn more about becoming a member of the HJCC. Download a printable application form or register for membership online!

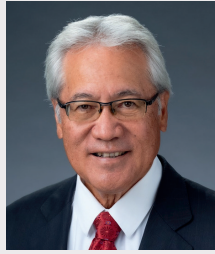
Flora-Dec Sales, Inc.
Greg Ryan & Associates LLLC
Island Energy Services
Raymond James
Remedy Intelligent Staffing
Sodexo
Wilson Okamoto Corporation

LEADERSHIP

Executive Committee



Chair of the Board
Derek Kaneshiro
*VP, ATM Product Manager
 Central Pacific Bank*



President & CEO
Steven Teruya
*President & CEO
 Honolulu Japanese
 Chamber of Commerce*



Chair-Elect
Kaiulani Shinsato
*Director, Customer Energy
 Resources Programs
 Hawaiian Electric Company*



First Vice Chair
Dean Yoneshige
*Broker Sales Manager
 Pacific Guardian Life Insurance
 Company, Ltd.*



Vice Chair,
 Administration / Secretary
Peter Hamasaki
*General Counsel
 Foodland Super Market, Limited*



Vice Chair,
 Finance / Treasurer
Randi Tsushima
*Senior Vice President,
 Commercial Banking Manager
 Central Pacific Bank*



Vice Chair
Ina Chang
*President
 Aloha Data*



Vice Chair
Ryan Kawamoto
*Underwriting Supervisor
 Island Insurance Co., Ltd.*



Vice Chair
Michael McMurdo
*CEO
 Cetra Technology*



Vice Chair
Sanford Morioka
*President
 Edward Enterprises, Inc.*



Vice Chair
Brice Ueda
*Attorney
 Law Offices of Gary Y. Shigemura*



Immediate Past Chair
Marc Nakamoto
*Regional Vice-President
 Sodexo*

Board of Directors

Elected Directors (2 Year Term)



John Paul Bautista
Senior Manager
N&K CPAs, Inc.



Christopher Buto
Leasing Officer
First Hawaiian Bank



Kathryn Fujitani
VP, Marketing Manager
Hawaii National Bank



Craig Hirasaki
Owner / Creative Director
ConnectWorks Group Hawaii



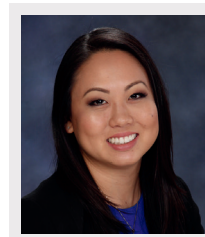
Kacie Hirotsu
Employee Benefits Consultant
PSH Insurance, Inc.



Miki Ikeda
Vice President | Renewable
Energy Sector Manager
Bank of Hawaii



Blake Isobe
CPA, Managing Principal
N&K CPAs, Inc.



Crystine Ito
Marketing Director
Rainbow Drive-In



David Jones
Senior Vice President & Division
Manager, Properties
Central Pacific Bank



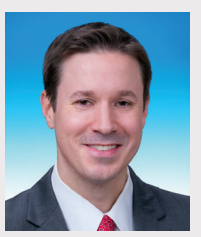
Brandon Kamigaki
Director, Auto Retail Strategic
Initiatives & Operations
Servco Pacific, Inc.



Chenise Kanemoto
Owner / Principal Attorney
Ziva Law



Taylor Kiriara
SVP & Mapunapuna Commercial
Banking Center Manager
Central Pacific Bank



Rob Nelson
President & Chief Operating Officer
Finance Factors, Ltd.



Kristine Okada
Marketing Manager
Servco Pacific Inc.



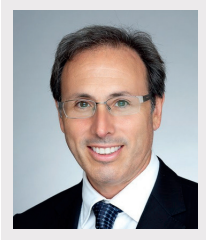
Jennifer Okubo Polido
Attorney
Law Office of Jennifer R. Okubo
Polido LLLC



Joanna Oshiro
Managing Director
Deloitte & Touche LLP

Board of Directors

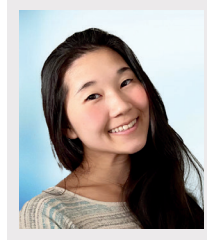
Elected Directors (2 Year Term) (continued)



Michael Saines
*Partner, Vice President of
Development
Form Partners*



Cathy Tong
*Agent
Coldwell Banker Realty*



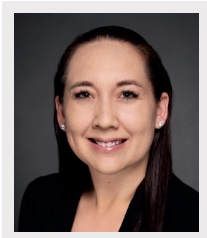
Tobie Wada
*Proposal Manager, Marketing
HDCC*



Paul Yokota
*President (retired)
FCH Enterprises*

Board of Directors

Appointed Directors (1 Year Term)



Kristin Alm
*Director, Staffing and Operations
Remedy Intelligent Staffing*



Benson Choo
*EVP - Chief Information Officer
Finance Factors, Ltd.*



Zak Denzer
*Vice-President Commercial
Banking Officer
American Savings Bank*



Garrett Matsumoto
*President
Honolulu Japanese Junior
Chamber of Commerce*



Jared Say
Hawktree International



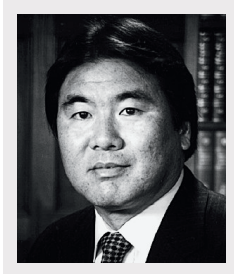
Gus Yniguez
*Owner / Broker
The Surrealty Group*

Board of Directors

Advisory Council



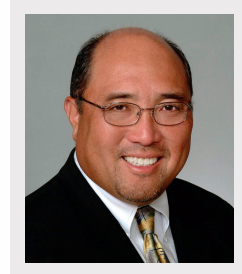
Walter Saito
Past Chair FY 1980
President Emeritus
Japanese Cultural Center of Hawaii



Wayne Miyao
Past Chair FY 1990
Chairman
Hiroshima-Hawaii
Sister City Committee



Arnold Hirotsu
Past Chair FY 2004
President
PSH Insurance, Inc.



Glenn Nakamura
Past Chair FY 2007
CEO & Principal Broker
BRYCL RESORTS INTL.



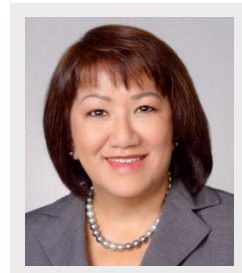
Kathryn Inkinen
Past Chair FY 2008
Founder (retired)
Inkinen Executive Search



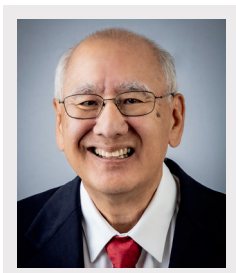
Sidney Hamada
Past Chair FY 2010
President
Flora-Dec Sales, Inc.



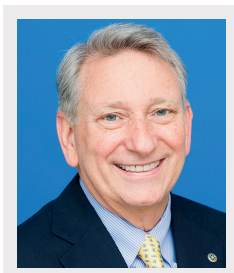
Gordon Kagawa
Past Chair FY 2014
Chairman & CEO
Occidental Underwriters
of Hawaii, Ltd.



Candice Naito
Past Chair FY 2015
Senior Vice President and
Oahu Region Manager (retired)
First Hawaiian Bank



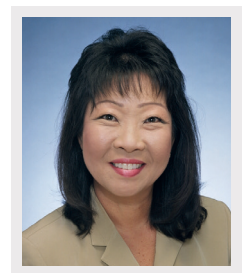
Tyler Tokioka
Past Chair FY 2016
Chair of the Board
Island Insurance Co., Ltd.



Dave Erdman
Past Chair FY 2017
Founder, Senior Advisor
PacRim Marketing Group, Inc.
dba Vector USA



Brian Nishida
Past Chair FY 2018
President & CEO
Step Stone Business Development



Melanie Okazaki
Past Chair FY 2019
Regional Marketing Manager
(retired)
McDonald's Restaurants
of Hawaii

Board of Directors

Advisory Council (continued)



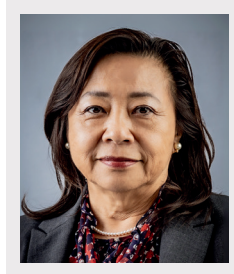
Jon Tsukamoto

Past Chair FY 2020
Vice President
Morgan Stanley Wealth
Management



Jason Ito

Past Chair FY 2021
Vice President of Administration,
Labor and Community Relations
Kyo-ya Management Company, Ltd.



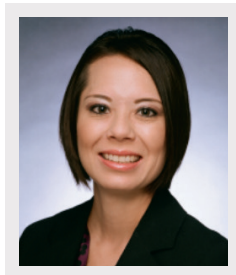
Rika Hirata

Past Chair FY 2022
Vice President & Team Leader
First Hawaiian Bank



Myles Shibata

Past Chair FY 2023
Principal
MSS Consulting



Kristi Inkinen Yanagihara

Past Chair FY 2024
Owner
Remedy Intelligent Staffing



Marc Nakamoto

Past Chair FY 2025
Regional Vice-President
Sodexo

Honorary Board of Directors

Bert Tokairin

Past Chair 1979

Norman Shigemura

Past Chair 1982

Lionel Tokioka

Past Chair 1983

Eigo Kudo

Past Chair 1988

Minoru Ueda

Past Chair 1992

Mieko Otsuka

Past Chair 1995

Gerald Ushijima

Past Chair 1996

Wayne Ishihara

Past Chair 1999

Howard Hanada

Past Chair 2002

Wayne Kirihara

Past Chair 2006

Ronald Hayashi

Past Chair 2009

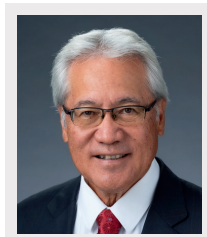
Wayne Kato

Past Chair 2011

Christine Kubota

Past Chair 2012

Staff



Steven Teruya

President & CEO



Marilyn Oda

Office Manager /
Director of Accounting



Mai Shiomi

Special Events Manager /
Digital Marketing Specialist



Eri Toyama

Program Manager &
Japan Specialist

Past Chairs

1900-1902	Kenji Imanishi	1961	Ralph Honda	1998-1999	Wayne Ishihara
1903-1905	Kantaro Kishi	1962	Lawrence Kagawa	1999-2000	Joichi Saito
1905-1909	Danzaburo Yonekura	1963	Robert Sato	2000-2001	Robert Fujii
1909-1912	Wasuke Motoshige	1964	Jinshi Murashige	2001-2002	Howard Hanada
1913-1915	Danzaburo Yonekura	1965	Shinzaburo Sumida	2002-2003	Ronald Migita
1916	Masao Kawahara	1966-1967	Tsuyoshi Nishimoto	2003-2004	Arnold Hirotsu
1917	Yoichi Takakuwa	1968	Hideo Kawano	2004-2005	Gregg Mueller
1918	Kakuro Yamamoto	1969	George Fukunaga	2005-2006	Wayne Kirihara
1919	Seitaro Aoki	1970	William Tsuji	2006-2007	Glenn Nakamura
1920	Masao Kawahara	1971	Teruo Himoto	2007-2008	Kathryn Inkinen
1921-1923	Sanshichi Ozaki	1972- Jun 1973	Sidney Kosasa	2008-2009	Ronald Hayashi
1924	Ichiro Nakao	1973-1974	Hideo Kajikawa	2009-2010	Sidney Hamada
1925	Goro Nakayama	1974-1975	Robert Kaya	2010-2011	Wayne Kato
1926-1927	Ichiro Nakao	1975-1976	Fred Tamura	2011-2012	Christine Kubota
1928-1932	Kenkichi Iida	1976-1977	Rusty Kawamura	2012-2013	Scott Higa
1933	Daizo Sumida	1977-1978	Walter Tagawa	2013-2014	Gordon Kagawa
1934-Mar 1937	Seizo Yamamoto	1978-1979	Bert Tokairin	2014-2015	Candice Naito
Apr 1937-Dec 1937	Manzuchi Hashimoto	1979-1980	Walter Saito	2015-2016	Tyler Tokioka
1938	Daizo Sumida	1980-1981	Donald Doi	2016-2017	Dave Erdman
1939	Seizo Yamamoto	1981-1982	Norman Shigemura	2017-2018	Brian Nishida
1940	Koichi Iida	1982-1983	Lionel Tokioka	2018-2019	Melanie Okazaki
1941	Taichi Sato	1983-1984	Hugh O'Rilley	2019-2020	Jon Tsukamoto
1947	Daizo Sumida	1984-1985	Harold Yamanaka	2020-2021	Jason Ito
1948	Koichi Iida	1985-1986	Milton Yanagawa	2021-2022	Rika Hirata
1949	Hideichi Fukunaga	1986-1987	Russell Mezurashi	2022-2023	Myles Shibata
1950	Sadato Morifuji	1987-1988	Eigo Kudo	2023-2024	Kristi Inkinen Yanagihara
1951	Kumaji Furuya	1988-1989	Daniel Takehara	2024-2025	Marc Nakamoto
1952	Tokuyoshi Awamura	1989-1990	Wayne Miyao		
1953	Masayuki Tokioka	1990-1991	Raymond Yamasaki		
1954	Motohiro Tanimura	1991-1992	Minoru Ueda		
1955	Shigeru Horita	1992-1993	Benjamin Fukumoto		
1956	Takeo Isoshima	1993-1994	Allan Totoki		
1957-Apr 1958	Mitsuo Tagawa	1994-1995	Mieko Otsuka		
May 1958-Dec 1958	Noboru Yamasaki	1995-1996	Gerald Ushijima		
1959	Masayuki Adachi	1996-1997	Garrett Serikawa		
1960	Katsuro Miho	1997-1998	Leonard Katsarsky		



Back Row: Steven Teruya (President & CEO), Dave Erdman, Brian Nishida, Kathryn Inkinen, Kristi Inkinen Yanagihara, Marc Nakamoto, Derek Kaneshiro, Candice Naito and Rika Hirata
Front Row: Arnold Hirotsu, Toshimune Kanaya (guest), Gordon Kagawa, Arnold Honda, Jon Tsukamoto, Tyler Tokioka, Myles Shibata, Glenn Nakamura and Sidney Hamada

The Honolulu Japanese Chamber of Commerce PLAYBOOK 2025 - 2026

WHY DO WE EXIST?

We are an organization founded for the promotion of business and economic growth in Hawaii based upon the principle, **“Members Supporting Members.”**

WHAT DO WE DO?

The organization provides opportunities and programs which promote leadership development and membership interaction, resulting in growth and the continuation of its legacy



HOW DO WE BEHAVE?

- TRUST Is Our Moral Compass
- ACCOUNTABILITY | Do What We Say We're Going To Do
- TEAMWORK | Work Collaboratively
- INNOVATION | Be Innovative
- Open Communications
- Be Champions Of the HJCC

HOW WILL WE SUCCEED?

We will continuously improve our **members experience** through strategies, technologies and practices that create a valuable experience as a means of attracting and retaining members in a way that will differentiate us from other organizations.

WHAT IS MOST IMPORTANT RIGHT NOW?

Meeting Members' Expectations



OUR VALUE PROPOSITION

At the Honolulu Japanese Chamber of Commerce, “Members Supporting Members” is the spirit that drives everything we do.

We believe in meaningful relationships, and we create opportunities to initiate and foster trusted relationships. Our members collaborate, share expertise, refer clients, and advocate for each other because we know that when one business grows, our entire community thrives.

When you are a part of our network, your support makes a difference and others are ready to support you.

HJCC 125th Anniversary - PLATINUM Sponsors

See your people clearly.

Using the E3 Behavioral Insights Platform, you'll be able to hire smarter, create teams that better understand themselves and each other, and ultimately grow your business as a direct result.



The E3 Behavioral Insights Platform

Data-driven insights that help you understand you and your team's behavioral patterns.



Behavioral Benchmarking

Instantly identify candidates who will succeed in the role, and your company culture.



Individual, Group & Team Coaching

Heighten individual and team awareness, communication and collaboration.

Learn more at behavioralessentials.com

info@behavioralessentials.com

Honolulu Japanese Chamber of Commerce
125th Anniversary PLATINUM Sponsor



First Hawaiian Bank.

HJCC Member since 1950

Hansen
Exceptional Service for *Your* Success!

Empowering Hawaii's businesses with exceptional distribution services since 1957. Committed to quality and reliability, we're Hawaii's preferred distribution partner

www.HansenHawaii.com



CONGRATULATIONS

to the Honolulu Japanese Chamber of Commerce
on 125 Years of Success.

We proudly stand with the HJCC
in their mission to support and empower
Hawaii's business community.



LIVE your healthiest LIFE.

We're here with personalized health care designed to help you live your life, your way.

HawaiiPacificHealth.org/HealthierLife

**HAWAII
PACIFIC
HEALTH**

KAPI'OLANI
PALI MOMI
STRAUB BENIOFF
WILCOX

CREATING A HEALTHIER HAWAII



Making Waves

Congratulations to the Honolulu Japanese Chamber of Commerce on 125 years of business leadership and excellence in Hawai'i.

HEI.com



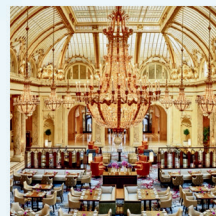
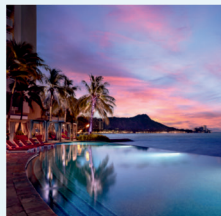
Local experts protecting local people.



ISLAND INSURANCE

BUSINESS | AUTO | HOME
(808) 643-4000 | islandinsurance.com

Congratulations to the Honolulu Japanese Chamber of Commerce on 125 years of Leadership and Legacy



Proud member since 1960



999 Bishop St #2200
Honolulu, HI 96813
(808) 524-2255
nkcpa.com

At N&K CPAs, we are more than just a trusted accounting firm providing audit, tax, and advisory services—we are an employer committed to a people-first culture. This philosophy drives everything we do, from fostering a fun and collaborative work environment to empowering employees through agile leadership and real-time innovation. We don't just invite feedback; we act on it, turning employee insights into impactful initiatives that shape our culture, technology, and performance programs. With a strong focus on growth, open dialogue, and meaningful career development, we're proud to be a firm where employees feel heard, valued, and inspired to build lasting careers.



**BEST PLACES
TO WORK
WINNER**

GOLD



HJCC MEMBER SINCE 1950 • 125TH ANNIVERSARY PLATINUM SPONSOR



OCCIDENTAL UNDERWRITERS

For every step of your journey since 1933.

LIFE INSURANCE • LONG-TERM CARE
INSURANCE • DISABILITY INSURANCE •
CRITICAL ILLNESS INSURANCE • ANNUITIES

www.askoxy.com

(808) 536-1933



Built on Relationships. Driven by Purpose.

In Japanese culture, *Shinrai* represents a deep trust built through loyalty, mutual respect, and long-term relationships. At **PSH Insurance**, *Shinrai* is more than a philosophy — it's the foundation of how we do business.

For over 40 years, we've helped Hawai'i businesses of all sizes design **employee benefit programs** with intention, care, and results. We bring tailored solutions and a commitment to your company's long-term success.

Let's **build a benefits strategy** that earns your trust — and keeps it.



pshinsurance.com

737 Bishop Street, Suite 2120 | Phone: (808) 531-6211

REPLACE WITH ACE!

FREE QUOTE!
aceautoglass.net

Year
Since 1975

Serving Hawaii for 3 Generations
Mobile Service • All Makes & Models

Certified Calibration Center
Advanced Technology Safety Systems
Forward Collision Avoidance

2024
BEST OF HAWAII
FIRST PLACE
KITV 4

2023
BEST OF HAWAII
FIRST PLACE
KITV 4

2022
BEST OF HAWAII
FIRST PLACE
KITV 4

2021
BEST OF HAWAII
FIRST PLACE
KITV 4

2020
BEST OF HAWAII
FIRST PLACE
KITV 4

2019
BEST OF HAWAII
FIRST PLACE
KITV 4

KALIHI - 847-3217

MCCULLY - 593-2366

AIEA - 488-2821

KANEOHE - 235-3760

MAUI - 871-7921

KAUAI - 245-8084

HILO - 935-4002

KONA - 329-5223

GUAM - 671-649-4330

WINDSHIELD REPLACEMENT

CERTIFIED CALIBRATION CENTER

ROCK CHIP REPAIR

CERTIFIED TECHNICIANS

MOBILE SERVICE



Members Supporting Members since 1900

***To our valued
members:
thank you for 125
years of strength,
service, and
support!***

HJCC 125th Anniversary - GOLD Sponsors

ALOHA DATA

Turning Paper into **Progress**
Supporting Members with **Smarter Scanning**

Get in Touch

- ✉ InaC@AlohaData.com
- 🌐 www.AlohaData.com
- ☎ 808-626-5500
- 📍 Pacific Guardian Center
737 Bishop Street, Suite 100
Honolulu, HI 96813

"If you don't know where you're going, you might wind up someplace else"

~ Yogi Berra

On-target design & marketing that connects.
connectworksgroup.com

CONGRATULATIONS

HJCC

ON

125

years

EDWARD ENTERPRISES, INC.
PRINT • PRODUCT MANAGEMENT • SOLUTIONS
Puuhale Rd Suite 101, Honolulu, HI 96819
(808) 841-4231 • ec3.com

congratulations

HJCC

on

125

YEARS



**HELPING COMMUNITIES
CREATE A SUSTAINABLE
AND RESILIENT TOMORROW**



KAI HAWAII, INC.

**FULL-SERVICE
STRUCTURAL
ENGINEERING FIRM**

PROJECT MANAGEMENT
STRUCTURAL ENGINEERING
FORENSIC ENGINEERING
SPECIAL INSPECTION SERVICES

50 S. Beretania St. #C-119C, Honolulu, HI 96813 | 808.533.2210 | www.kaihawaii.com

**Congratulations on 125 years
of remarkable success, HJCC!**

Pacific Guardian Life is honored to be a member since 1980.



Proudly serving the families and businesses of Hawaii since 1961, we offer **TDI solutions** and **life insurance products** tailored to meet changing financial needs.



Pacific Guardian Tower • 1440 Kapiolani Blvd, Suite 1700 • (808) 955-2236 • pacificguardian.com



**We unite
employers and
qualified
associates in
powerful ways that
enable both to
prosper and grow!**

**WHY ARE WE
YOUR REMEDY?**



Expert recruiters continually training to deliver the best service



Elaborate 5-step screening process for candidates & skills assessments evaluations



Offering multiple services
Temp, Temp to Hire & Direct Placement
Payroll Services

(808) 733-8550 | remedystaffing.com/employers



Dear Hawai'i,
caring for you is our *kuleana*.

We are homegrown, driven by a profound *kuleana* — a privileged duty — to care for Hawai'i's people.

uhahealth.com



PROGRAMS

WHAT WE DO

Under the leadership and work of the committees, the HJCC provides its members with numerous events and programs each year. Here are some of the Chamber's activities:

Signature Events

Shinnen Enkai

Held in January, the Chamber's annual New Year's banquet, Shinnen Enkai, features a lively celebration with omamori sales, and a special pre-show entertainment.

The highlight of the evening is the kabuki play *Gonin Otoko*, with members re-enacting the scene on the Inase River from the *Shiranami Gonin Otoko*, kabuki play that premiered in Edo (Tokyo) in 1862. Five infamous *dorobos* (thieves) tell their life stories before being captured by the police.

LunchBox Learning Series

Coordinated twice a year by the Community Relations Committee, members and guests gather for a talk-story session over lunch with guest speaker panelists on a specific topic.

Chopsticks & Wine

Chopsticks & Wine is the Chamber's signature fundraiser which features delicious cuisine from Hawaii's finest chefs, paired with wines and spirits from a variety of distributors. The event attracts sellout crowds and is great for networking.

Inauguration & Member Recognition Celebration

Each July, members and guests offer their congratulations to the incoming Chair of the Board and the newly elected Officers and Directors. The event also honors a member company with the Generational Award for their significant contributions to the growth and development of Hawaii's business and community sectors over two or more generations of ownership.

Samurai Classic Golf Tournament

The Samurai Classic Golf Tournament host a full field of members and guests alternating at member courses, Hawaii Prince Golf Course and the Pearl Country Club.

This annual tournament always guarantees a great day of friendly competition, networking and laughs.





PROGRAMS

Members Supporting Members

Mentorship Program

Formulated by the KAIIKA Committee, the Mentorship Program's purpose is to foster professional growth and development by pairing young members with experienced senior members of the HJCC.



Fostering Friendship Events

Networking Events / Pau Hanas

Coordinated by the HJCC Membership Development Committee, new members are invited to networking events / pau hanas. The purpose of these gatherings is to welcome the new members and provide them an opportunity to meet other members in the Chamber. Networking events are held multiple times a year.



Mālama ka 'āina Events

Community Relations

The Community Relations Committee provides members with fellowship opportunities and leadership experience all while "giving back" to the community. Members are encouraged to recommend non-profit organizations in need of volunteers and manpower.



Leadership & Entrepreneurial Exchange Program

This program is designed to advance management and leadership skills with an entrepreneurial mindset. The cohorts will have the opportunity to engage directly with established business professional and build relationship with fellow LEEP Leaders and their Hiroshima counterparts.



Standing Committee Chairs



Budget & Finance

Joanna Oshiro

Monitors overall fiscal management, operations and planning of the Chamber to ensure that a sound financial posture is maintained. The committee provides guidance and assistance in the management and maintenance of an efficient accounting and financial reporting system of the Chamber. Also assures that member derive maximum benefits from Chamber services through budgeting and allocation of funds.



Communications and Marketing

Kathryn Fujitani

The committee was formed to develop the aspirational brand message for the HJCC. It also develops and maintains an internal communications plan which encourages member participation and results in greater awareness of the value of membership.



Government Affairs

Michael Saines

The committee maintains Chamber awareness and involvement in government affairs affecting business and the community in general. It establishes and coordinates the Chamber's positions on public or legislative issues that best reflect the interest of our members.



Legal / HR / Governance

Chenise Kanemoto

Serves as legal counsel to the Chamber and establishes and maintains rules and procedures that provide the most efficient means by which the Chamber can fulfill its objectives. Maintains sound employment policies and staff procedures, to include fair employee compensation and benefit program.



Leadership & Entrepreneurial Exchange Program

Rika Hirata

The focus of this program is to create meaningful relationships between its participants that begin with friendships and an exchange of business values, solutions, ideas that build trust and open doors to cultivating new business relationships between Hawaii and Hiroshima. LEEP cohorts represent diverse industries including banking & finance, health, energy, education, insurance, retail, legal, small business owners and entrepreneurs.



Membership Development

Jared Say

Increases the membership in the Chamber by broadening the membership base so that all business, professional and industrial sectors are represented to ensure financial stability of the Chamber. Develops strategies for new member recruitment and retention.



Small Business Advocacy

David Jones

Implements policies, procedures, actions that support the development and growth of small business by providing a voice in the Chamber programs related to legislative and regulatory matters, and economic development. It plans special workshops focused on the needs and interests of small businesses, including the annual Business Solutions seminar and Game Changers event.



Ways & Means

Crystine Ito

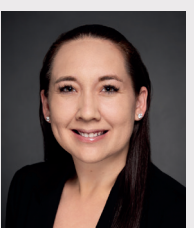
Plans and carries out fundraising events to satisfy the fiscal requirements of HJCC. Annual events include Chopsticks & Wine and the Samurai Classic Golf Tournament.



KAIKA / Mentorship Program

Tobie Wada

This committee was formed to promote and enhance the HJCC woman member experience within the Chamber through meaningful programs and initiatives and to grow the number of women members within our organization. They plan / carry out events, seminars, forums, etc. in women's interests for all HJCC members.



Community Relations

Kristin Alm

The objective of this committee is to ensure that the HJCC through its many programs and events improves the community's understanding of the Chamber's mission.



Technology

Benson Choo

The Information Technology (IT) Committee will provide technical oversight & guidance in support of the Honolulu Japanese Chamber of Commerce's operations and activities.

GOING ABOVE & BEYOND

Outstanding Member of the Year

Each fiscal year, a selected individual(s) of the Honolulu Japanese Chamber of Commerce is designated by the Chair of the Board of Directors to be the "HJCC Outstanding Member(s) of the Year" for significant contributions to the Chamber.

2025 Outstanding Member of the Year



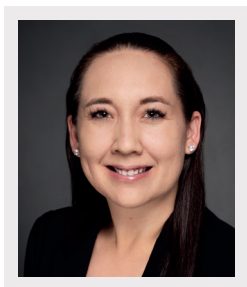
Kristi Inkinen Yanagihara

*Owner
Remedy Intelligent Staffing
Member Since 2003*

Outstanding Committee Chair

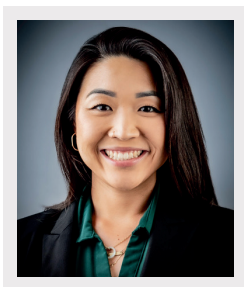
The "Outstanding Committee Chair Award" recognizes a committee leader who has demonstrated exceptional leadership, dedication, and effectiveness in guiding their team toward successful outcomes.

2025 Outstanding Committee Chairs



Kristin Alm

*Managing Director
Remedy Intelligent Staffing
Member Since 2018
Community Relations Committee*



Kacie Hirotsu

*Employee Benefits Consultant
PSH Insurance, Inc.
Member Since 20021
Membership Development Committee*

Past Outstanding Members

1980	Tatsuko Hino	2006	Leo Asuncion, Jr. Ronald Hayashi Jodi Ito
1981	Ronald Ushijima	2007	Christine Kubota Sammy Li
1982	Teruo Himoto	2008	Richard Matsu Tyler Tokioka Tetsushi Uno
1983	Donald Doi	2009	Roy Ishihara Takae Okuma-Johnson
1984	Walter Tagawa	2010	Roy Amemiya, Jr. Scott Higa Arnold Hirotsu Michael Nomura Lynette Lo Tom
1985	Walter Saito	2011	Mark Ibara
1986	Minoru Ueda	2012	Brian Nishida Terry Noyama
1987	Dean Matsushima	2013	Rika Hirata Jon Tsukamoto
1988	Yoshiharu Satoh	2014	Davis Higa
1989	Buster Komori	2015	Patti Fukada David Yamashita
1990	Leonard Katsarsky Glenn Nakamura	2016	Jodi Nozoe Chang
1991	Paul Yamashige	2017	Steven Teruya
1992	Garrett Serikawa	2018	Jason Ito Myles Shibata
1993	Wayne Ishihara	2019	Rick Mishima
1994	Howard Hanada David Seya	2020	Derek Kaneshiro
1995	Rene Mansho Tony Masamitsu	2021	Peter Hamasaki Jill Kuramoto
1996	Thomas Sakamoto	2022	Marc Nakamoto
1997	Melanie Hashimura	2023	Blake Isobe Michael McMurdo
1998	Daniel Takehara	2024	Dean Yoneshige
1999	Natsuko Lambert		
2000	Wayne Miyao Robert Nagao		
2001	Joseph Sailer		
2002	Albert Kobayashi Robert Kuniyuki Kiyoshi Ohbe Yoshiyuki Otoshi		
2003	Ralph Honda Jodi Nozoe Stanley Yamamoto		
2004	Fred Morinaka		
2005	Emi Anamizu Sidney Hamada		

KUROKO Award

Kuroko in Japanese describes the kabuki stage people who are dressed in black and assist the performers with stage props and dress. They are behind the scenes and do not stand out for the audience.

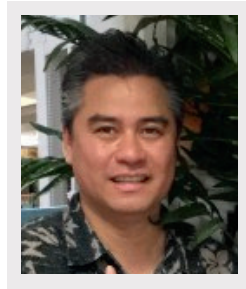
Every year the selection of the Kuroko Award is done by the Chamber staff, who can readily identify these members who support the Chamber's events and activities behind the scenes.

2025 KUROKO Award Recipients



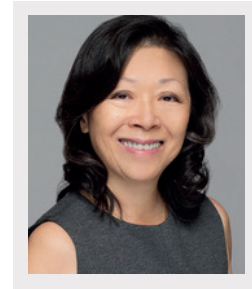
Kathryn Fujitani

*VP, Marketing Manager
Hawaii National Bank
Member Since 2016*



Kennedy Smythe

*General Manager
Flora-Dec Sales, Inc.
Member Since 2022*



Michelle Wong

*VP/Property Manager
Ideal Properties, Inc.
Member Since 2024*

Outstanding Member Company

The "Outstanding Member-Company Award" recognizes exceptional contributions and active participation by a member organization within the Honolulu Japanese Chamber of Commerce. Recipients are celebrated for their positive impact, consistent engagement, and dedication to excellence in both their operations and community involvement.

2025 Outstanding Member Company



EDWARD ENTERPRISES, INC.
PRINT • PRODUCT MANAGEMENT • SOLUTIONS

Generational Award Honoree

The Honolulu Japanese Chamber of Commerce established the Generational Award in 2005 to recognize local businesses that have made a significant contribution to the growth and development of Hawaii's business and community sectors over two or more generations of ownership.

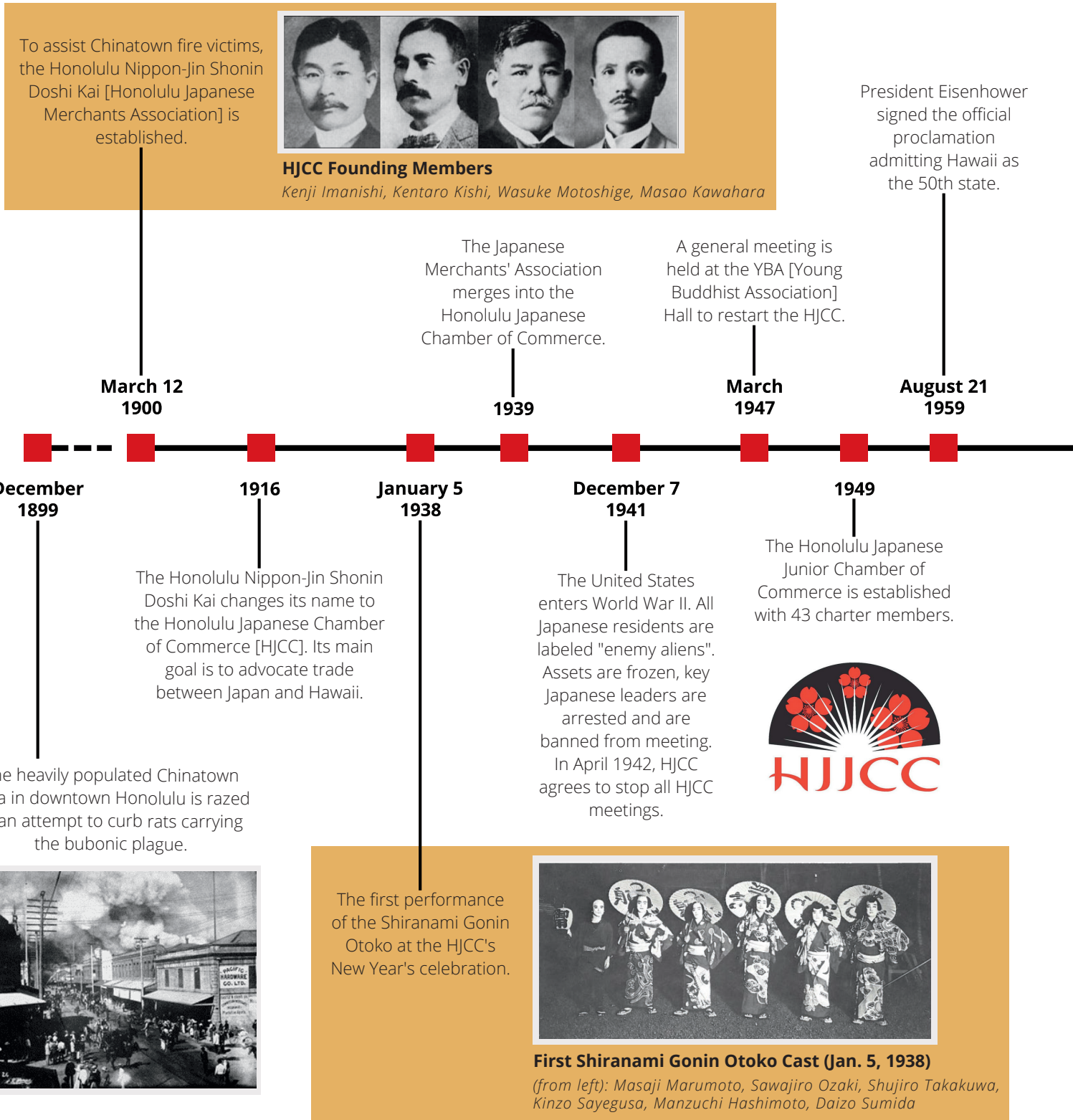
Past Generational Award Honorees

- | | | | |
|-------------|---|-------------|--|
| 2005 | Iida's Store
<i>Iida Family</i> | 2013 | S & M Sakamoto, Inc.
<i>Sakamoto Family</i> |
| 2006 | Robert M. Kaya Builders, Inc.
<i>Kaya and Higa Family</i> | 2014 | Standard Capital Group, Inc.
<i>Totoki Family</i> |
| 2007 | ABC Stores
<i>Kosasa Family</i> | 2015 | Aloha Tofu Factory, Inc.
<i>Uyehara Family</i> |
| 2008 | Hawktree International
<i>Takaki Family</i> | 2016 | Conrad Enterprises, Inc.
<i>Sasaki Family</i> |
| 2009 | Tony Hawaii Automotive Group, Ltd.
<i>Masamitsu Family</i> | 2017 | M. Harada Enterprises, Inc.
<i>Harada Family</i> |
| 2010 | Occidental Underwriters of Hawaii, Ltd.
<i>Kagawa Family</i> | 2018 | Beretania Florist
<i>Nakamoto Family</i> |
| 2011 | Y. Hata & Co., Ltd.
<i>Hata Family</i> | 2019 | Servco Pacific Inc. |
| 2012 | Iolani Sportswear Ltd.
<i>Kawakami Family</i> | 2023 | Hawaii National Bank
<i>Luke Family</i> |
| | | 2024 | Aloha Shoyu Company |

A JOURNEY THROUGH HISTORY

Milestones

Founded in 1900, the Honolulu Japanese Chamber of Commerce (HJCC) is relevant today as it was when it was started. We are proud of the accomplishments we have been able to achieve through the efforts of our dedicated members.



Milestones

Milestones (continued)



The HJCC Samurai Classic Golf Tournament holds its first invitational Golf Tournament at the Pearl Country Club. Underwriters for the event are Hawaii National Bank, Love's Bakery, Aloha Airlines, GTS Distributors, Continental Airlines and Slipper House.



HJCC established a sister chamber agreement with the Hiroshima Chamber of Commerce & Industry.

HJCC establishes a joint affiliation agreement with the Fukui Chamber of Commerce & Industry,

The HJCC is made an associate member of the Chamber of Commerce of Hawaii.

1968

May 1978

May 1981

1960

June 1975

September 1978

1988

July 1990

August 1991

The first Teru-Yaki Chicken fundraiser is held named after 1971 Chair of the Board, Teruo "Teru" Himoto.

The first HJCC Art Show is created as a community service project and is named "Young Japanese Art Show" and is later changed to "Young Artist Art Show" to assist aspiring artists with emerging talent to display their art. The last art show was held in 2018 after a 40-year run.

Phase 1 is completed.

Groundbreaking for Phase 1 is held for a new facility including offices, meeting rooms and a tea house.

The HJCC Cultural Center is built. The building serves as its headquarters for the chamber. The Cultural Hall and Tea Ceremony House are open to the community for both public and private events.



The Original HJCC Building

The Japanese Cultural Center of Hawaii is established and the HJCC donates its facility and property to the JCCH as an act of commitment.



JAPANESE CULTURAL CENTER OF HAWAII



In observance of the HJCC's 100th anniversary, the Torii Gate is constructed. The gate, donated and built by the Hiroshima Chamber of Commerce & Industry and the Hiroshima Prefecture & City Government, is situated on the corner of South King and Beretania Streets and symbolizes the friendship and goodwill between Hiroshima and Hawaii. It is later donated to the City & County of Honolulu.



HONOLULU JAPANESE CHAMBER OF COMMERCE
CHARITABLE CORPORATION

The HJCC Charitable Corporation, a 501c(3) is established. A scholarship fund is established in partnership with the Hawaii Community Foundation that provides two scholarships annually to perpetuity.

ALOHA

The HJCC is actively involved with the Aloha for Japan as a Steering Committee member to help with tsunami and earthquake relief efforts in Japan and serves as the collection point for all donations.

2001

2002

2011

July 1992

The original headquarters is demolished making way for Phase 2 that will house a banquet hall, parking structure, historical gallery and martial arts dojo.

May 1994

Construction is completed for Phase 2. It is dedicated in traditional Shinto, Buddhist and Hawaiian blessings.

March 2000

The HJCC Celebrates its 100th Anniversary

July 2002

The inaugural Game Changers event is sponsored by the HJCC's Small Business Advocacy Committee. It is a gathering, focused on prominent individuals in the community who have made unique impact in their lives personally and in our community.

August 2010

The first annual Wine Tasting & Silent Auction is held at the Bishop Museum. The event would later be renamed Chopsticks & Wine, the HJCC premier annual fundraising event.

2014

The HJCC receives a certificate of congratulations from the State Legislature for its outstanding and meaningful work benefiting Japan-Hawaii relations.



Japanese Cultural Center of Hawaii



Milestones

Milestones (continued)



The HJCC Celebrates 120th Anniversary.

The World Health Organization declares a global pandemic known as the coronavirus pandemic also known as COVID-19.

HJCC in-person activities are severely curtailed and must quickly adapt to remote Zoom meetings, virtual events as staff work remotely from home.

March 2020

August 2022

2024

March 2025

2017

April 2023

April 2024

The HJCC Celebrates its 125th Anniversary

The State of Hawaii and the HJCC celebrate a belated 20th Anniversary of the sister-state agreement with the Hiroshima Prefecture in Hiroshima, Japan. The visit marked the opening of Japan to outside travelers since the beginning of the pandemic.



Honolulu Governor David Ige and wife Dawn Amano-Ige and Hiroshima Governor Hidehiko Yuzaki in Hiroshima, Japan

The Emerging Young Business Leaders Program [EYBLP] changes its program name to the Leadership & Entrepreneurial Exchange Program [LEEP]. The focus of the LEEP Program is to create meaningful relationships between its participants that begin with friendships and an exchange of business values, solutions, ideas that build trust and open doors to cultivating new business relationships between Hawaii and Hiroshima.



The HJCC creates the Hawaii-Hiroshima Emerging Young Business Leaders Program [EYBLP], tied to the 20th Sister-State Anniversary between Hawaii and Hiroshima. The program focus on leadership development through week-long programs held in both Honolulu and Hiroshima.



Hawaii-Hiroshima Emerging Young Business Leaders Program Cohort 3

The HJCC Celebrates its 20th Chopsticks & Wine



The HJCC Celebrates a belated 40th Anniversary Celebration with sister-chamber, the Hiroshima Chamber of Commerce & Industry while the Torii Gate undergoes new painting.



Hiroshima Chamber of Commerce and Industry delegates visit Moiliili Torii Gate



HONOLULU JAPANESE CHAMBER OF COMMERCE
CHARITABLE CORPORATION

Honolulu Japanese Chamber of Commerce Charitable Corporation

501c(3) Non Profit

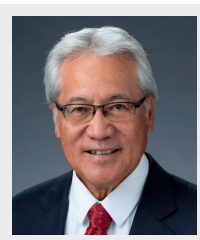
Historical Milestones of the Charitable Corporation

<div style="background-color: red; width: 20px; height: 20px; margin-bottom: 10px;"></div> <div style="background-color: black; width: 2px; height: 100%;"></div>	<p>January 29, 2001</p> <p>June 30, 2005</p> <p>2008</p> <p>2012</p> <p>April 11, 2016</p>	<p>Honolulu Japanese Chamber of Commerce Charitable (HJCC) is incorporated in the state of Hawaii as a Section 501(c)(3) corporation of the IRS Code and organized exclusively for charitable, scientific, literary, religious or educational purposes.</p> <p>Board of Directors approves in concept establishing a Leadership Training Program through collaboration with the University of Hawaii Community Colleges; Japan America Institute of Management Science (JAIMS), and other public institutions; approves partnering with JAIMS in their Global Management Training Service program by offering partial scholarships.</p> <p>The HJCC Charitable Corporation officially adopts the Torii Gate located at the Triangle Park in Moiliili under the City and County of Honolulu's Adopt a Sculpture program for its care and maintenance.</p> <p>The Board establishes a Community Fund to respond to non-profit organizations in need of financial assistance.</p> <p>HJCC Charitable Corp. Board of Directors proceed with establishing a Scholarship Fund with the Hawaii Community Foundation with an initial amount of \$25,000. The Scholarship Fund will also be set up to receive cash, marketable securities and insurance policies.</p>
---	---	--

HJCC Charitable Corporation Board of Directors



Chair of the Board
Tyler Tokioka
*Honolulu Japanese Chamber of Commerce Charitable Corporation
Chair of the Board
Island Insurance*



President / Secretary / Treasurer
Steven Teruya
*President & CEO
Honolulu Japanese Chamber of Commerce*



HJCC Chair
Derek Kaneshiro
*VP, ATM Product Manager
Central Pacific Bank*



Chair-Elect
Kaiulani Shinsato
*Director, Customer Energy Resources Programs
Hawaiian Electric Company*



Immediate Past Chair
Marc Nakamoto
*Regional Vice-President
Sodexo*

HJCC 125th Anniversary - PLATINUM Sponsor

Congratulations to the Honolulu Japanese Chamber of Commerce on celebrating its 125th Anniversary



Hawai'i Runs on Local Power.

From the moment you fill up at a Texaco station, to the planes taking off from our airports, to the energy powering our communities—Island Energy Services, Hawai'i's exclusive Texaco licensee, is there. Powered by local people who keep it all moving.

Our Texaco stations are operated by local business owners, serving generations of Hawai'i families with quality fuel and

trusted service. Day and night, our logistics team delivers fuel safely across islands. And our commercial teams partner with key industries—supplying jet fuel for airlines and fuel for power plants that help energize Hawai'i.

Island Energy is more than a fuel company. We're a local force, proudly powered by people who call Hawai'i home.

IslandEnergyServices.com



Local experts protecting local people.



BUSINESS | AUTO | HOME

Contact your independent agent
(808) 643-4000 | islandinsurance.com

Island Insurance is Hawai'i's only locally owned property & casualty insurer ranked among the nation's best.

We know Hawai'i, and we're here to protect what matters most—your family, your business, your future.