



Creating Opportunities  
SINCE 1900



HONOLULU JAPANESE CHAMBER OF COMMERCE

FOSTERING FRIENDSHIPS • CONNECTING B2B • MĀLAMA KA 'ĀINA

# LEADERSHIP PROGRAMS HISTORY

July 1, 2023 - June 30, 2024

2454 S. Beretania Street. Suite 201  
Honolulu, HI 96826

[www.hjcc.org](http://www.hjcc.org)

[@HonoluluJapaneseChamber](https://www.facebook.com/HonoluluJapaneseChamber)

[@hjcc808](https://www.instagram.com/hjcc808)

# HONOLULU JAPANESE CHAMBER OF COMMERCE MISSION STATEMENT

We are an organization founded for the promotion of business and economic growth in Hawaii based upon the principle,

***"Members Supporting Members."***

The organization provides leadership and programs which promote membership interaction, resulting in growth and the continuation of its legacy.

We continue creating opportunities since 1900 to promote fostering friendships, connecting "**B2B**" (business-to-business), and mālama ka 'āina ('caring for the land').



# A Message from the Chair



The Honolulu Japanese Chamber of Commerce [HJCC] celebrates its 123rd year in 2023. This booklet will overview the organization's history, leadership and the various programs available to its members. It clearly reflects a strong legacy that has been established by our founders.

Our primary focus is our members and our programs and events are designed to add value to our membership whether it be networking events or seeking assistance from fellow members or member companies.

## ***Preserving our Legacy, Embracing the Future***

As the 2023-2024 Chairperson of the Honolulu Japanese Chamber of Commerce, I would like to express my commitment to honoring HJCC's long-standing culture and traditions while also ensuring that we are well-positioned to serve the future. We recognize that in order for us to move forward and adapt to a constantly changing business environment, it is essential that we remain true to our roots while growing and expanding our reach. Our mission is to foster strong relationships, promote economic growth, and embrace the new opportunities that come with it.

We are in the process of upgrading our website and membership management system for ease of navigation and to better connect members to members. In two years, we will celebrate our 125th Anniversary and plans are already under way to commemorate this auspicious milestone.

Our commitment to honoring tradition to serve the future membership applies not only to our business operations but also in how we strive to be a positive force for change in our local community. We are dedicated to leveraging our resources to foster meaningful dialogue and promote initiatives that will have a lasting impact.

The most critical work is not accomplished by the Chair alone. HJCC is fortunate to have influential and prominent leaders serving on the Executive Committee, its 30-member Board of Directors, along with the active support of its past chairs, the dozen standing committees with committee chairs & vice-chairs, our dedicated professional staff, and our President & CEO, Steven Teruya.

By embracing the spirit of innovation and collaboration, we know that together we can make meaningful progress and create a brighter future for all. We look forward to continuing to serve our community, Hawaii, and beyond. Thank you for your continued support and dedication.

### **Kristi Inkinen Yanagihara**

*Chair of the Board FY 2023-2024*

*Owner*

*Remedy Intelligent Staffing*

## Follow us!



Facebook  
@HonoluluJapaneseChamber



Instagram  
@HJCC808

## Corporate Members

As of June 2023

### Chairman's Circle

Central Pacific Bank  
Hawaiian Airlines  
Island Insurance Co., Ltd.  
Servco Pacific Inc.  
Y. Hata & Co., Limited

### President's Circle

ABC Stores  
First Hawaiian Bank  
Kyo-ya Management Company, Ltd.

### Director's Circle

NEC Corporation of America

### Executive Circle

Accuity LLP  
Edward Enterprises, Inc.  
Finance Factors, Ltd.  
HEI  
JTB Hawaii, Inc.  
N&K CPAs, Inc.  
Occidental Underwriters of Hawaii, Ltd.  
Pacific Guardian Life Insurance Co., Ltd.

### Corporate Circle

31AIKALIMA LLC  
aio Digital  
American Savings Bank  
Atlas Insurance Agency  
Englekirk LLC  
FCH Enterprises, Inc.  
Hawaii National Bank  
Hawaiian Telcom  
Kawailoa Development LLP  
The SSA Group

### Small Business Circle

AHL  
ARC & Partner  
Becker Communications, Inc.  
Ceridian  
Cetra Technology  
ConnectWorks Group Hawaii  
Flora-Dec Sales, Inc.  
Greg Ryan & Associates, A Limited Liability Law Company  
Hawaii Business Magazine  
HMSA  
Island Energy Services  
MW Group, Ltd.  
ProService Hawaii  
Raymond James  
Remedy Intelligent Staffing  
Sodexo

## Join the HJCC!

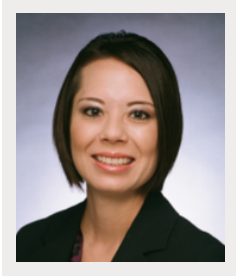
Individual & Corporate Memberships  
Available



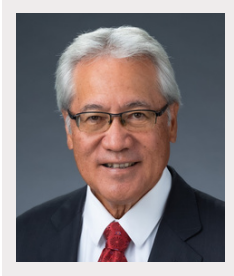
*Scan the QR code to learn more about becoming a member of the HJCC. Download a printable application form or register for membership online!*

# LEADERSHIP

## Executive Committee



Chair of the Board  
**Kristi Inkinen Yanagihara**  
 Owner  
*Remedy Intelligent Staffing*



President & CEO  
**Steven Teruya**  
 President & CEO  
*Honolulu Japanese Chamber of Commerce*



Chair-Elect  
**Marc Nakamoto**  
 Vice President  
*Sodexo*



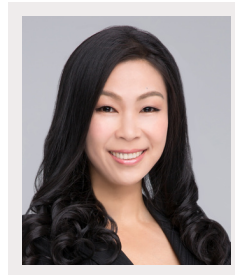
First Vice Chair  
**Derek Kaneshiro**  
 VP, ATM Product Manager  
*Central Pacific Bank*



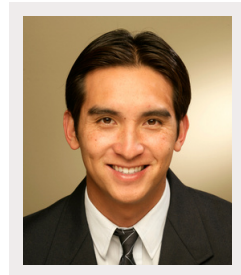
Vice Chair, Administration/  
 Secretary  
**Peter Hamasaki**  
 General Counsel  
*Foodland Super Market, Limited*



Vice Chair, Finance /  
 Treasurer  
**Blake Isobe**  
 CPA, Managing Principal  
*N&K CPAs, Inc.*



Vice Chair  
**Ina Chang**  
 President  
*Aloha Data*



Vice Chair  
**Casey Ching**  
 Vice President - Corporate  
 Properties  
*Servco Pacific Inc.*



Vice Chair  
**Michael McMurdo**  
 CEO  
*Cetra Technology*



Vice Chair  
**Kurt Murao**  
 Executive Vice President, General  
 Counsel, Chief Administrative  
 Officer and Corporate Secretary  
*HEI*



Vice Chair  
**Brice Ueda**  
 Attorney  
*Law Offices of Gary Y. Shigemura*



Immediate Past Chair  
**Myles Shibata**  
 Principal  
*MSS Consulting*

## Board of Directors

*Elected Directors (2 Year Term)*



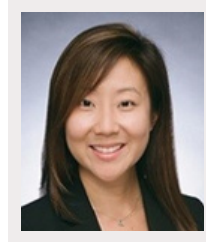
**Chris Anjo**  
*VP & Commercial Banking Officer*  
*First Hawaiian Bank*



**Seiji Aspengren**  
*CEO*  
*Aloha Freight Forwarders*



**Tobie Egami**  
*Marketing Coordinator*  
*G70*



**Miki Ikeda**  
*Vice President | Renewable*  
*Energy Sector Manager*  
*Bank of Hawaii*



**Tetsuya Kubo**  
*President and CEO*  
*JTB Hawaii, Inc.*



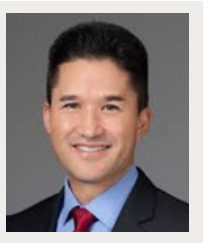
**Scott Kuioka**  
*Senior Vice President, Chief*  
*Operating Officer*  
*Island Insurance*



**Richard Manungas**  
*Assistant Vice President*  
*Branch Manager & Loan Officer*  
*Territorial Savings Bank*



**Gayle Marumoto**  
*Relationship Officer*  
*Hawaii National Bank*



**Scott Miyasato**  
*Senior Vice President, General*  
*Counsel*  
*Outrigger Hospitality Group*



**Sanford Morioka**  
*President*  
*Edward Enterprises, Inc.*



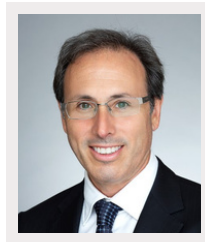
**Jodi Nozoe Chang**  
*Managing Director - Investment*  
*Officer; PIM Portfolio Manager*  
*Wells Fargo Advisors*



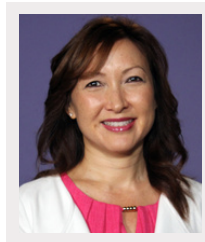
**Shannon Okinaka**  
*Executive Vice President & Chief*  
*Financial Officer*  
*Hawaiian Airlines*



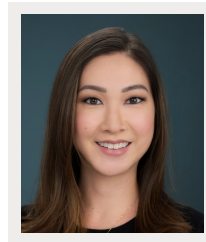
**Joanna Oshiro**  
*Managing Director*  
*Deloitte & Touche LLP*



**Michael Saines**  
*Partner, Vice President of*  
*Development*  
*Form Partners*



**Kaiulani Shinsato**  
*Director, Customer Energy*  
*Resources Programs*  
*Hawaiian Electric Company*



**Jenna Teruya**  
*Asset Manager*  
*Chopped Hawaii*

## Board of Directors

*Elected Directors (2 Year Term) (continued)*



**Randi Tsushima**  
SVP and Manager  
American Savings Bank



**Ronald Ushijima**  
President Emeritus  
Honolulu Japanese  
Chamber of Commerce



**Neal Yokota**  
President & CEO  
Stryker Weiner & Yokota  
Public Relations, Inc.



**Paul Yokota**  
President  
FCH Enterprises



**Dean Yoneshige**  
Assistant Vice President of  
Brokerage Sales  
Pacific Guardian Life Insurance  
Company

## Board of Directors

*Appointed Directors (1 Year Term)*



**Aaron Muraki**  
President  
Honolulu Japanese Junior  
Chamber of Commerce



**Nozomi Heenan**  
Vice President, Client Service  
Manager, International Banking  
Division  
Central Pacific Bank



**Chenise Iwamasa**  
Attorney  
Ziva Law, LLLC



**Taylor Kirihara**  
SVP and Mapunapuna Commercial  
Banking Center Manager  
Central Pacific Bank



**Karl Kobayashi**  
Partner  
Carlsmith Ball LLP



**Rus Murakami**  
Regional Vice President  
The SSA Group



**Jennifer Okubo Polido**  
Attorney  
Law Office of Jennifer R. Okubo  
Polido LLLC



**Kristine Wada**  
Marketing Manager  
Servco Pacific Inc.



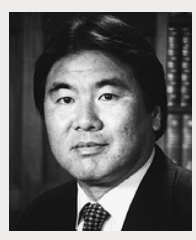
**Marcus Yano**  
Vice President, Business Sales  
and Technical Consulting  
Hawaiian Telcom

## Board of Directors

*Advisory Council*



**Walter Saito**  
Past Chair FY 1980  
*President Emeritus*  
*Japanese Cultural Center of Hawaii*



**Wayne Miyao**  
Past Chair FY 1990  
*Chairman*  
*Hiroshima-Hawaii*  
*Sister City Committee*



**Gerald Ushijima**  
Past Chair FY 1996  
*Principal*  
*Gerald Y, Ushijima, CPA*



**Wayne Ishinara**  
Past Chair FY 1999  
*President & CEO (retired)*  
*Honolulu Japanese*  
*Chamber of Commerce*



**Arnold Hirotsu**  
Past Chair FY 2004  
*President*  
*PSH Insurance, Inc.*



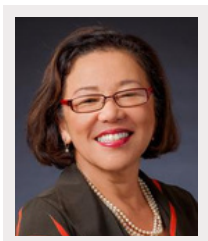
**Glenn Nakamura**  
Past Chair FY 2007  
*CEO & Principal Broker*  
*BRYCL Resorts International*



**Kathryn Inkinen**  
Past Chair FY 2008  
*Founder (retired)*  
*Inkinen Executive Search*



**Sidney Hamada**  
Past Chair FY 2010  
*President*  
*Flora-Dec Sales, Inc.*



**Christine Kubota**  
Past Chair FY 2012  
*President*  
*Damon Key Leong Kupchak Hastert*



**Scott Higa**  
Past Chair FY 2013  
*President*  
*Robert M. Kaya Builders, Inc.*



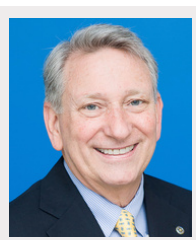
**Gordon Kagawa**  
Past Chair FY 2014  
*CEO*  
*Occidental Underwriters*  
*of Hawaii, Ltd.*



**Candice Naito**  
Past Chair FY 2015  
*Senior Vice President and*  
*Oahu Region Manager (retired)*  
*First Hawaiian Bank*



**Tyler Tokioka**  
Past Chair FY 2016  
*Chair of the Board*  
*Island Insurance Co., Ltd.*



**Dave Erdman**  
Past Chair FY 2017  
*Founder, CEO & President*  
*PacRim Marketing Group, Inc.*



**Brian Nishida**  
Past Chair FY 2018  
*President & CEO*  
*Step Stone Business Development*



**Melanie Okazaki**  
Past Chair FY 2019  
*Regional Marketing Manager*  
*McDonald's Restaurants*  
*of Hawaii*



## Board of Directors

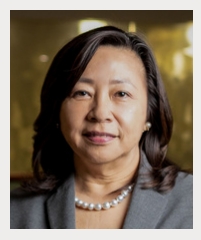
Advisory Council (continued)



**Jon Tsukamoto**  
Past Chair FY 2020  
Vice President  
Morgan Stanley Wealth  
Management



**Jason Ito**  
Past Chair FY 2021  
Vice President of Administration,  
Labor and Community Relations  
Kyo-ya Management Company, Ltd.

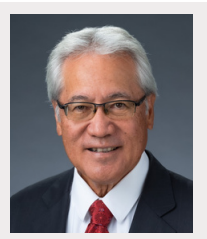


**Rika Hirata**  
Past Chair FY 2022  
Vice President & Team Leader  
First Hawaiian Bank



**Myles Shibata**  
Past Chair FY 2023  
Principal  
MSS Consulting

## Staff



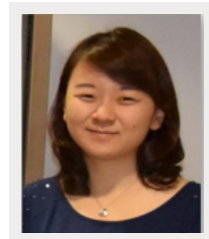
**Steven Teruya**  
President & CEO



**Merilyn Oda**  
Office Manager /  
Director of Accounting



**Mina Sakai**  
Program Manager &  
Japan Specialist



**Mai Shiomi**  
Special Events Manager /  
Digital Marketing Specialist

## Past Chairs

<b>1900-1902</b>	Kenji Imanishi	<b>1961</b>	Ralph Honda	<b>1998-1999</b>	Wayne Ishihara
<b>1903-1905</b>	Kantaro Kishi	<b>1962</b>	Lawrence Kagawa	<b>1999-2000</b>	Joichi Saito
<b>1905-1909</b>	Danzaburo Yonekura	<b>1963</b>	Robert Sato	<b>2000-2001</b>	Robert Fujii
<b>1909-1912</b>	Wasuke Motoshige	<b>1964</b>	Jinshi Murashige	<b>2001-2002</b>	Howard Hanada
<b>1913-1915</b>	Danzaburo Yonekura	<b>1965</b>	Shinzaburo Sumida	<b>2002-2003</b>	Ronald Migita
<b>1916</b>	Masao Kawahara	<b>1966-1967</b>	Tsuyoshi Nishimoto	<b>2003-2004</b>	Arnold Hirotsu
<b>1917</b>	Yoichi Takakuwa	<b>1968</b>	Hideo Kawano	<b>2004-2005</b>	Gregg Mueller
<b>1918</b>	Kakuro Yamamoto	<b>1969</b>	George Fukunaga	<b>2005-2006</b>	Wayne Kirihara
<b>1919</b>	Seitaro Aoki	<b>1970</b>	William Tsuji	<b>2006-2007</b>	Glenn Nakamura
<b>1920</b>	Masao Kawahara	<b>1971</b>	Teruo Himoto	<b>2007-2008</b>	Kathryn Inkinen
<b>1921-1923</b>	Sanshichi Ozaki	<b>1972- Jun 1973</b>	Sidney Kosasa	<b>2008-2009</b>	Ronald Hayashi
<b>1924</b>	Ichiro Nakao	<b>1973-1974</b>	Hideo Kajikawa	<b>2009-2010</b>	Sidney Hamada
<b>1925</b>	Goro Nakayama	<b>1974-1975</b>	Robert Kaya	<b>2010-2011</b>	Wayne Kato
<b>1926-1927</b>	Ichiro Nakao	<b>1975-1976</b>	Fred Tamura	<b>2011-2012</b>	Christine Kubota
<b>1928-1932</b>	Kenkichi Iida	<b>1976-1977</b>	Rusty Kawamura	<b>2012-2013</b>	Scott Higa
<b>1933</b>	Daizo Sumida	<b>1977-1978</b>	Walter Tagawa	<b>2013-2014</b>	Gordon Kagawa
<b>1934-Mar 1937</b>	Seizo Yamamoto	<b>1978-1979</b>	Bert Tokairin	<b>2014-2015</b>	Candice Naito
<b>Apr 1937-Dec 1937</b>	Manzuchi Hashimoto	<b>1979-1980</b>	Walter Saito	<b>2015-2016</b>	Tyler Tokioka
<b>1938</b>	Daizo Sumida	<b>1980-1981</b>	Donald Doi	<b>2016-2017</b>	Dave Erdman
<b>1939</b>	Seizo Yamamoto	<b>1981-1982</b>	Norman Shigemura	<b>2017-2018</b>	Brian Nishida
<b>1940</b>	Koichi Iida	<b>1982-1983</b>	Lionel Tokioka	<b>2018-2019</b>	Melanie Okazaki
<b>1941</b>	Taichi Sato	<b>1983-1984</b>	Hugh O'Rilley	<b>2019-2020</b>	Jon Tsukamoto
<b>1947</b>	Daizo Sumida	<b>1984-1985</b>	Harold Yamanaka	<b>2020-2021</b>	Jason Ito
<b>1948</b>	Koichi Iida	<b>1985-1986</b>	Milton Yanagawa	<b>2021-2022</b>	Rika Hirata
<b>1949</b>	Hideichi Fukunaga	<b>1986-1987</b>	Russell Mezurashi	<b>2022-2023</b>	Myles Shibata
<b>1950</b>	Sadato Morifuji	<b>1987-1988</b>	Eigo Kudo		
<b>1951</b>	Kumaji Furuya	<b>1988-1989</b>	Daniel Takehara		
<b>1952</b>	Tokuyoshi Awamura	<b>1989-1990</b>	Wayne Miyao		
<b>1953</b>	Masayuki Tokioka	<b>1990-1991</b>	Raymond Yamasaki		
<b>1954</b>	Motohiro Tanimura	<b>1991-1992</b>	Minoru Ueda		
<b>1955</b>	Shigeru Horita	<b>1992-1993</b>	Benjamin Fukumoto		
<b>1956</b>	Takeo Isoshima	<b>1993-1994</b>	Allan Totoki		
<b>1957-Apr 1958</b>	Mitsuo Tagawa	<b>1994-1995</b>	Mieko Otsuka		
<b>May 1958-Dec 1958</b>	Noboru Yamasaki	<b>1995-1996</b>	Gerald Ushijima		
<b>1959</b>	Masayuki Adachi	<b>1996-1997</b>	Garrett Serikawa		
<b>1960</b>	Katsuro Miho	<b>1997-1998</b>	Leonard Katsarsky		



**Back Row:** Scott Higa, Christine Kubota, Tyler Tokioka, Sidney Hamada, Wayne Ishihara, Gregg Mueller, Arnold Hirotsu, Glenn Nakamura, and Brian Nishida

**Seated:** Dave Erdman, Gordon Kagawa, Joichi Saito, Kathryn Inkinen, Melanie Okazaki, Jon Tsukamoto, Candice Naito, Raymond Yamasaki, Wayne Kirihara

# PROGRAMS

## WHAT WE DO

Under the leadership and work of the committees, the HJCC provides its members with numerous events and programs each year. Here are some of the Chamber's activities:



## Signature Events

### Shinnen Enkai

Held in January, the Chamber's annual New Year's banquet, Shinnen Enkai, features a lively celebration with food booths, omamori sales, and a special pre-show entertainment. The highlight of the evening is the kabuki play *Gonin Otoko*, with members re-enacting the scene on the Inase River from the *Shiranami Gonin Otoko*, kabuki play that premiered in Edo (Tokyo) in 1862. Five infamous *dorobos* (thieves) tell their life stories before being captured by the police.



### Game Changers

Coordinated by the Small Business Advocacy Committee and Community Relations Committee, members and guests come to learn how businesses have changed their game plans in today's dynamic and challenging marketplace.



### Chopsticks & Wine

Chopsticks & Wine is the Chamber's signature fundraiser which features delicious cuisine from Hawaii's finest chefs, paired with wines and spirits from a variety of distributors. The event attracts sellout crowds and is great for networking.



### Inauguration & Generational Award Celebration

Each July, members and guests offer their congratulations to the incoming Chair of the Board and the newly elected Officers and Directors. The event also honors a member company with the Generational Award for their significant contributions to the growth and development of Hawaii's business and community sectors over two or more generations of ownership.

### Samurai Classic Golf Tournament

The Samurai Classic Golf Tournament host a full field of members and guests alternating at member courses, Hawaii Prince Golf Course and the Pearl Country Club.

This annual tournament always guarantees a great day of friendly competition, networking and laughs.





## PROGRAMS

### Connecting B2B Events

#### Business Solutions Workshops

Coordinated by Small Business Advocacy Committee, members are provided with informational workshops on pertinent topics to help their businesses grow.



### Fostering Friendship Events

#### Networking Events / Pau Hanas

Coordinated by the HJCC Membership Development Committee, new members are invited to networking events / pau hanas. The purpose of these gatherings is to welcome the new members and provide them an opportunity to meet other members in the Chamber. Networking events are held multiple times a year.



### Mālama ka 'āina Events

#### Laulima - Community Partnership Program

The Laulima Program provides members with fellowship opportunities and leadership experience all while "giving back" to the community. Members are encouraged to recommend non-profit organizations in need of volunteers and manpower.



### Emerging Young Business Leaders Program

Started in 2017, the HJCC in collaboration with the Hiroshima Prefecture launched the EYBL program with the primary objectives to develop leadership skills among its young members cohorts and to build cross-country, long term relationships.



## Standing Committee Chairs



Budget & Finance

### **Joanna Oshiro**

Monitors overall fiscal management, operations and planning of the Chamber to ensure that a sound financial posture is maintained. The committee provides guidance and assistance in the management and maintenance of an efficient accounting and financial reporting system of the Chamber. Also assures that member derive maximum benefits from Chamber services through budgeting and allocation of funds.



Communications and Marketing

### **Kristine Wada**

The committee was formed to develop the aspirational brand message for the HJCC. It also develops and maintains an internal communications plan which encourages member participation and results in greater awareness of the value of membership.



Government Affairs

### **Michael Saines**

The committee maintains Chamber awareness and involvement in government affairs affecting business and the community in general. It establishes and coordinates the Chamber's positions on public or legislative issues that best reflect the interest of our members.



Japan Business Relations

### **Nozomi Heenan**

Directs HJCC initiatives in business enhancement and expansion as part of Hawaii's overall economic development vision for the Pacific, with a focus on Japan. It plans seminars on topics of interest to the business community. Determines if business missions to Japan to encourage trade between Hawaii and Japan are appropriate.



Legal Counsel / Human Resources

### **Karl Kobayashi**

Serves as legal counsel to the Chamber and establishes and maintains rules and procedures that provide the most efficient means by which the Chamber can fulfill its objectives. Maintains sound employment policies and staff procedures, to include fair employee compensation and benefit program.

## Standing Committee Chairs

*Standing Committee Chairs (continued)*



Membership Development

### **Jennifer Okubo Polido**

Increases the membership in the Chamber by broadening the membership base so that all business, professional and industrial sectors are represented to ensure financial stability of the Chamber. Develops strategies for new member recruitment and retention.



Small Business Advocacy

### **Taylor Kirihara**

Implements policies, procedures, actions that support the development and growth of small business by providing a voice in the Chamber programs related to legislative and regulatory matters, and economic development. It plans special workshops focused on the needs and interests of small businesses, including the annual Business Solutions seminar and Game Changers event.



Ways & Means

### **Dean Yoneshige**

Plans and carries out fundraising events to satisfy the fiscal requirements of HJCC. Annual events include Chopsticks & Wine and the Samurai Classic Golf Tournament.



KAIKA (Women's Diversity Initiative)

### **Tobie Egami**

This committee was formed to promote and enhance the HJCC woman member experience within the Chamber through meaningful programs and initiatives and to grow the number of women members within our organization. They plan / carry out events, seminars, forums, etc. in women's interests for all HJCC members.



Community Relations

### **Kaiulani Shinsato**

The objective of this committee is to ensure that the HJCC through its many programs and events improves the community's understanding of the Chamber's mission.



Technology

### **Marcus Yano**

The Information Technology (IT) Committee will provide technical oversight & guidance in support of the Honolulu Japanese Chamber of Commerce's operations and activities.

# GOING ABOVE & BEYOND

## Outstanding Member of the Year

Each fiscal year, a selected individual(s) of the Honolulu Japanese Chamber of Commerce is designated by the Chair of the Board of Directors to be the "HJCC Outstanding Member(s) of the Year" for significant contributions to the Chamber.



**Blake Isobe**

*CPA Managing Principal  
N&K CPAs  
Member Since 2013*



**Michael McMurdo**

*CEO  
Cetra Technology  
Member Since 2009*

## KUROKO Award

Kuroko in Japanese describes the kabuki stage people who are dressed in black and assist the performers with stage props and dress. They are behind the scenes and do not stand out for the audience.

Every year the selection is done by the Chamber staff, who can readily identify these members.



**Jennifer Okubo Polido**

*Attorney  
Law Office of Jennifer R. Okubo Polido, LLLC  
Member Since 2015*

## Past Outstanding Members

<b>1980</b>	Tatsuko Hino	<b>2006</b>	Leo Asuncion, Jr. Ronald Hayashi Jodi Ito
<b>1981</b>	Ronald Ushijima	<b>2007</b>	Christine Kubota Sammy Li
<b>1982</b>	Teruo Himoto	<b>2008</b>	Richard Matsui Tyler Tokioka Tetsushi Uno
<b>1983</b>	Donald Doi	<b>2009</b>	Roy Ishihara Takae Okuma-Johnson
<b>1984</b>	Walter Tagawa	<b>2010</b>	Roy Amemiya, Jr. Scott Higa Arnold Hirotsu Michael Nomura Lynette Lo Tom
<b>1985</b>	Walter Saito	<b>2011</b>	Mark Ibara
<b>1986</b>	Minoru Ueda	<b>2012</b>	Brian Nishida Terry Noyama
<b>1987</b>	Dean Matsushima	<b>2013</b>	Rika Hirata Jon Tsukamoto
<b>1988</b>	Yoshiharu Satoh	<b>2014</b>	Davis Higa
<b>1989</b>	Buster Komori	<b>2015</b>	Patti Fukada David Yamashita
<b>1990</b>	Leonard Katsarsky Glenn Nakamura	<b>2016</b>	Jodi Nozoe Chang
<b>1991</b>	Paul Yamashige	<b>2017</b>	Steven Teruya
<b>1992</b>	Garrett Serikawa	<b>2018</b>	Jason Ito Myles Shibata
<b>1993</b>	Wayne Ishihara	<b>2019</b>	Rick Mishima
<b>1994</b>	Howard Hanada David Seya	<b>2020</b>	Derek Kaneshiro
<b>1995</b>	Rene Mansho Tony Masamitsu	<b>2021</b>	Peter Hamasaki Jill Kuramoto
<b>1996</b>	Thomas Sakamoto	<b>2022</b>	Marc Nakamoto
<b>1997</b>	Melanie Hashimura	<b>2023</b>	Blake Isobe Michael McMurdo
<b>1998</b>	Daniel Takehara		
<b>1999</b>	Natsuko Lambert		
<b>2000</b>	Wayne Miyao Robert Nagao		
<b>2001</b>	Joseph Sailer		
<b>2002</b>	Albert Kobayashi Robert Kuniyuki Kiyoshi Ohbe Yoshiyuki Otoshi		
<b>2003</b>	Ralph Honda Jodi Nozoe Stanley Yamamoto		
<b>2004</b>	Fred Morinaka		
<b>2005</b>	Emi Anamizu Sidney Hamada		

## Generational Award Honoree

The Honolulu Japanese Chamber of Commerce established the Generational Award in 2005 to recognize local businesses that have made a significant contribution to the growth and development of Hawaii's business and community sectors over two or more generations of ownership. Award recipients are honored at the Chamber's Inauguration and Generational Award Celebration.

Generational Award Celebration events and the presentation of the 2020 ~ 2022 Generational Awards were cancelled due to the COVID-19 pandemic.



### Hawaii National Bank and the Luke Family

Kan Jung Luke, known to most as K.J. Luke, was born and raised in Kohala on the Big Island and grew up tending his father's general store. He eventually moved to Honolulu and graduated from Saint Louis School, then the University of Hawaii, and Harvard Business School. In 1960, K.J. started Hawaii National Bank to serve Hawaii's diverse population and the local business community. From the beginning, the bank's mantra has always been the "Home of Warm-Hearted Bankers" and that remains true to this day, through three generations of family leadership. Today, K.J.'s son Warren Luke serves as Chairman of the Board, and Warren's son Bryan Luke is President and CEO. With branches on Oahu, Maui and Hawaii Island, Hawaii National Bank is a community bank that specializes in serving locally owned, closely held businesses.



**Luke Family**

## Past Generational Award Honorees

<b>2005</b>	Iida's Store Iida Family
<b>2006</b>	Robert M. Kaya Builders, Inc. Kaya and Higa Family
<b>2007</b>	ABC Stores Kosasa Family
<b>2008</b>	Hawktree International Takaki Family
<b>2009</b>	Tony Hawaii Automotive Group, Ltd. Masamitsu Family
<b>2010</b>	Occidental Underwriters of Hawaii, Ltd. Kagawa Family
<b>2011</b>	Y. Hata & Co., Ltd. Hata Family
<b>2012</b>	Iolani Sportswear Ltd. Kawakami Family
<b>2013</b>	S & M Sakamoto, Inc. Sakamoto Family
<b>2014</b>	Standard Capital Group, Inc. Totoki Family
<b>2015</b>	Aloha Tofu Factory, Inc. Uyehara Family
<b>2016</b>	Conrad Enterprises, Inc. Sasaki Family
<b>2017</b>	M. Harada Enterprises, Inc. Harada Family
<b>2018</b>	Beretania Florist Nakamoto Family
<b>2019</b>	Servco Pacific Inc.
<b>2023</b>	Hawaii National Bank Luke Family



# A JOURNEY THROUGH HISTORY

## Milestones

Founded in 1900, the Honolulu Japanese Chamber of Commerce (HJCC) is relevant today as it was when it was started. We are proud of the accomplishments we have been able to achieve through the efforts of our dedicated members.

**December 1899**



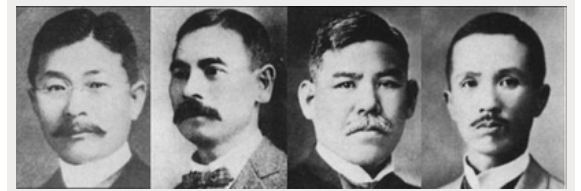
The heavily populated Chinatown area in downtown Honolulu is razed in an attempt to curb rats carrying the bubonic plague.

**March 12, 1900**

To assist Chinatown fire victims, the Honolulu Nippon-Jin Shonin Doshi Kai [Honolulu Japanese Merchants Association] is established.

**1912**

The Honolulu Nippon-Jin Shonin Doshi Kai changes its name to the Honolulu Japanese Chamber of Commerce [HJCC]. Its main goal is to advocate trade between Japan and Hawaii.



**HJCC Founding Members**

*Kenji Imanishi, Kentaro Kishi, Wasuke Motoshige, Masao Kawahara*

**1920**

The Japanese Merchant's Association is founded.

**January 5, 1938**

The first performance of the Shiranami Gonin Otoko at the HJCC's New Year's celebration.



**First Shiranami Gonin Otoko Cast (Jan. 5, 1938)**

*(from left): Masaji Marumoto, Sawajiro Ozaki, Shujiro Takakuwa, Kinzo Sayegusa, Manzuchi Hashimoto, Daizo Sumida*

**1939**

The Japanese Merchants' Association merges into the Honolulu Japanese Chamber of Commerce.

**December 7, 1941**

The United States enters World War II. All Japanese residents are labeled "enemy aliens". Assets are frozen, key Japanese leaders are arrested and are banned from meeting. In April 1942, HJCC agrees to stop all HJCC meetings.

**March 1947**

A general meeting is held at the YBA [Young Buddhist Association] Hall to restart the HJCC.

**1949**



The Honolulu Japanese Junior Chamber of Commerce is established with 43 charter members.

**August 21, 1959**

President Eisenhower signed the official proclamation admitting Hawaii as the 50th state.

## Milestones

*Milestones (continued)*

**1960** The HJCC Cultural Center is built. The building serves as its headquarters for the chamber. The Cultural Hall and Tea Ceremony House are open to the community for both public and private events.

**1968** The HJCC is made an associate member of the Chamber of Commerce of Hawaii.

**June 1975** The first Teru-Yaki Chicken fundraiser is held named after 1971 Chair of the Board, Teruo "Teru" Himoto.



**The Original HJCC Building**

**May 1978**



The Samurai Golf Classic holds its first invitational Golf Tournament. at the Pearl Country Club. Underwriters for the event are Hawaii National Bank, Love's Bakery, Aloha Airlines, GTS Distributors, Continental Airlines and Slipper House.

**September 1978** The first HJCC Art Show is created as a community service project and is named "Young Japanese Art Show" and is later changed to "Young Artist Art Show" to assist aspiring artists with emerging talent to display their art. The last art show was held in 2018 after a 40-year run.

**May 1981** HJCC established a sister chamber agreement with the Hiroshima Chamber of Commerce & Industry.

**May 1981** HJCC establishes a joint affiliation agreement with the Fukui Chamber of Commerce & Industry,

**1988** The Japanese Cultural Center of Hawaii is created and the HJCC donates its facility and property to the JCCH as an act of commitment.

**July 1990** Groundbreaking for phase 1 is held for a new facility including offices, meeting rooms and a tea house.

**August 1991** Phase 1 is completed.

**July 1992** The original headquarters is demolished making way for Phase 2 that will house a banquet hall, parking structure, historical gallery and martial arts dojo.

**May 1994** Construction is completed for Phase 2. It is dedicated in traditional Shinto, Buddhist and Hawaiian blessings.



**Japanese Cultural Center of Hawaii**

# Milestones

*Milestones (continued)*

**2001** The HJCC Charitable Corporation, a 501 c(3) is established. A scholarship fund is established in partnership with the Hawaii Community Foundation that provides two scholarships annually to perpetuity.

**2002**



In observance of the HJCC's 100th anniversary, the Torii Gate is constructed. The gate, donated and built by the Hiroshima Chamber of Commerce & Industry and the Hiroshima Prefecture & City Government, is situated on the corner of South King and Beretania Streets and symbolizes the friendship and goodwill between Hiroshima and Hawaii. It is later donated to the City & County of Honolulu.

**July 2002**

The first annual Wine Tasting & Silent Auction is held at the Bishop Museum. The event would later be renamed Chopsticks & Wine, the HJCC premier annual fundraising event.



**2009 - 2010**

The HJCC celebrates its 110th Anniversary.

**August 2010**

The inaugural Game Changers event is sponsored by the HJCC's Small Business Advocacy Committee. It is a gathering, focused on prominent individuals in the community who have made unique impact in their lives personally and in our community.

**2011**



The HJCC is actively involved with the Aloha for Japan as a Steering Committee member to help with tsunami and earthquake relief efforts in Japan and serves as the collection point for all donations.

**2014**

The HJCC receives a certificate of congratulations from the State Legislature for its outstanding and meaningful work benefiting Japan-Hawaii relations.

**2017**

The HJCC creates the Hawaii-Hiroshima Emerging Young Business Leaders Program [EYBLP], tied to the 20th Sister-State Anniversary between Hawaii and Hiroshima. The program focus on leadership development through week-long programs held in both Honolulu and Hiroshima.



**Hawaii-Hiroshima Emerging Young Business Leaders Program Cohort 3**

## Milestones

*Milestones (continued)*

**March 2020**



The HJCC celebrates its 120th Anniversary during the fiscal year 2020-2021.

**March 2020**

The World Health Organization declares a global pandemic known as the coronavirus pandemic also known as COVID-19.

HJCC in-person activities are severely curtailed and must quickly adapt to remote Zoom meetings, virtual events as staff work remotely from home.

**August 2022**

The State of Hawaii and the HJCC celebrate a belated 20th Anniversary of the sister-state agreement with the Hiroshima Prefecture in Hiroshima, Japan. This visit marked the opening of Japan to outside travelers since the beginning of the pandemic.



**Honolulu Governor David Ige and wife Dawn Amano-Ige and Hiroshima Governor Hidehiko Yuzaki in Hiroshima, Japan**

**April 2023**



**Hiroshima Chamber of Commerce and Industry delegates visit Moilili Torii Gate**

The HJCC celebrates a belated 40th Anniversary Celebration with sister-chamber, the Hiroshima Chamber of Commerce & Industry while the Torii Gate undergoes new painting.



HONOLULU JAPANESE CHAMBER OF COMMERCE  
CHARITABLE CORPORATION

## Honolulu Japanese Chamber of Commerce Charitable Corporation

*501c(3) Non Profit*

### **Historical Milestones of the Charitable Corporation**

**January 29, 2001:** Honolulu Japanese Chamber of Commerce Charitable (HJCC) is incorporated in the state of Hawaii as a Section 501(c)(3) corporation of the IRS Code and organized exclusively for charitable, scientific, literary, religious or educational purposes.

**June 30, 2005:** Board of Directors approves in concept establishing a Leadership Training Program through collaboration with the University of Hawaii Community Colleges; Japan America Institute of Management Science (JAIMS), and other public institutions; approves partnering with JAIMS in their Global Management Training Service program by offering partial scholarships.

**2008:** The HJCC Charitable Corporation officially adopts the Torii Gate located at the Triangle Park in Moiliili under the City and County of Honolulu's Adopt a Sculpture program for its care and maintenance.

**2012:** The Board establishes a Community Fund to respond to non-profit organizations in need of financial assistance.

**April 11, 2016:** HJCC Charitable Corp. Board of Directors proceed with establishing a Scholarship Fund with the Hawaii Community Foundation with an initial amount of \$25,000. The Scholarship Fund will also be set up to receive cash, marketable securities and insurance policies.

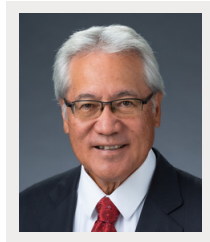
## HJCC Charitable Corporation Board of Directors



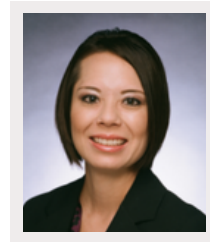
Chair of the Board  
**Tyler Tokioka**  
*Honolulu Japanese Chamber of  
Commerce Charitable Corporation  
Chair of the Board  
Island Insurance*



Vice Chair  
**Ronald Ushijima**  
*President Emeritus  
Honolulu Japanese  
Chamber of Commerce*



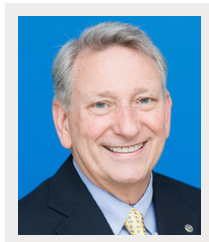
President / Secretary /  
Treasurer  
**Steven Teruya**  
*President & CEO  
Honolulu Japanese  
Chamber of Commerce*



HJCC Chair  
**Kristi Inkinen Yanagihara**  
*Owner  
Remedy Intelligent Staffing*



HJCC Immediate Past Chair  
**Myles Shibata**  
*Principal  
MSS Consulting*



Director  
**Dave Erdman**  
*Founder, CEO & President  
PacRim Marketing Group, Inc.*



Director  
**Howard Hanada**  
*Partner (Retired)  
Grant Thornton LLP*



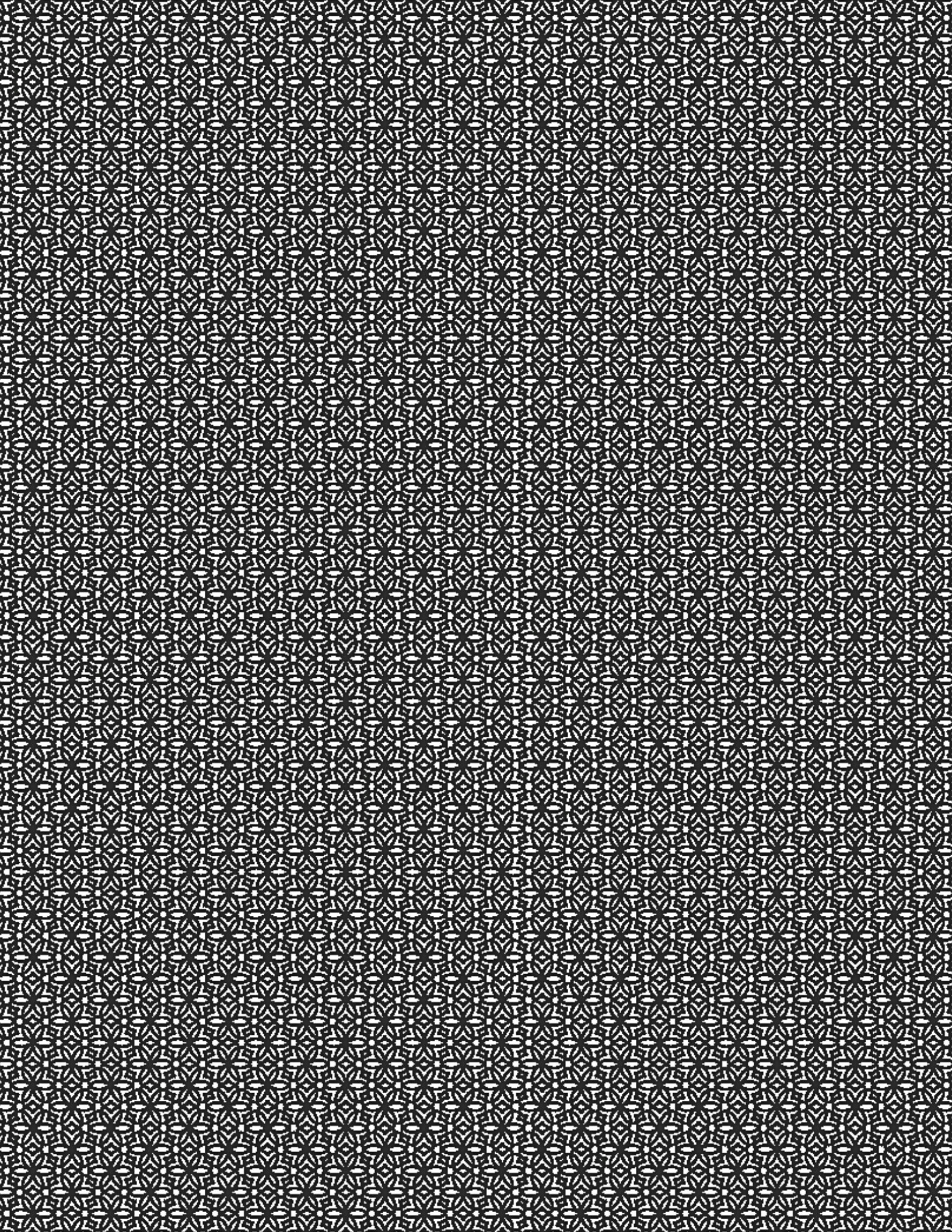
Director  
**Brian Nishida**  
*President & CEO  
Step Stone Business  
Development*



Director  
**Melanie Okazaki**  
*Regional Marketing Manager  
McDonald's Restaurants  
of Hawaii*



Director  
**Gerald Ushijima**  
*Principal  
Gerald Y. Ushijima, CPA*





# Local experts protecting local people.

Island opened its doors over 80 years ago to provide kamaaina with insurance they can trust. Today, as a Top 50 nationally-ranked property and casualty insurer, Island remains true to its local values in service to its customers and communities. From protecting local businesses of all sizes, to growing families like the Mariotas, Island Insurance understands Hawaii and is always here to help.

Marcus and Kiyomi Mariota,  
Island Insurance customers



Auto | Home | Business

Contact Your Independent Agent • (808) 643-4000 • [islandinsurance.com](http://islandinsurance.com)