



125
HJCC

Creating Opportunities
SINCE 1900



HONOLULU JAPANESE CHAMBER OF COMMERCE



FOSTERING FRIENDSHIPS • CONNECTING B2B • MĀLAMA KA ĀINA

Leadership Program History

July 1, 2024 - June 30, 2025

2454 S. Beretania Street, Suite 201
Honolulu, HI 96826

www.hjcc.org

 @HonoluluJapaneseChamber
 @hjcc808



HONOLULU JAPANESE CHAMBER OF COMMERCE MISSION STATEMENT

We are an organization founded for the promotion of business and economic growth in Hawaii based upon the principle,

"Members Supporting Members."

The organization provides leadership and programs which promote membership interaction, resulting in growth and the continuation of its legacy.

We continue creating opportunities since 1900 to promote fostering friendships, connecting "**B2B**" (business-to-business), and mālama ka 'āina ('caring for the land').



A Message from the Chair



"This booklet will provide an overview of the organization's history, leadership, and the various programs available to its members. It clearly reflects the strong legacy established by our founders. Our primary focus is on our members, and our programs and events are designed to add value to our membership, whether through networking events or seeking assistance from fellow members or member companies."

As the 2024-2025 Chairperson of the Honolulu Japanese Chamber of Commerce, I would like to express my commitment to the promotion of business and economic growth in Hawaii based upon the principle of Members Supporting Members.

REVITALIZE WITH RELEVANCE: BUILDING RESILIENCE

As we look to the new fiscal year, I offer the three guiding principles of **RENEWAL, RELEVANCE, AND RESILIENCE**. These pillars have served as the foundation of our collective efforts dating back to our founding in 1900 and have guided us through the challenges and opportunities throughout the past 124 years. 2025 will mark our chamber's 125th Anniversary and I have the honor of launching the year-long festivities.

RENEWAL is not merely a process of change; it is a mindset—a commitment to constant evolution and improvement. It calls upon us to challenge the status quo, to question assumptions, and to embrace innovation in all its forms.

Equally important is our dedication to **RELEVANCE**. In a world that is constantly in flux, relevance is the currency of success. It requires us to stay attuned to the needs of our stakeholders, the trends of our industry, and the expectations of our members. Let us strive not merely to keep pace with change but to lead the way—to be proactive, forward-thinking, and responsive to the demands of a rapidly changing landscape.

Yet, for all our efforts to renew and remain relevant, we must also cultivate **RESILIENCE**—the ability to withstand adversity, to adapt to unforeseen circumstances, and to emerge stronger in the face of challenges. Resilience must be nurtured, cultivated, and ingrained into the very DNA of our organization. Let's commit ourselves to building a culture of resilience—one that empowers us to confront adversity with courage, determination, and unwavering resolve.

As we start our journey together, let's remember that our success is not measured by our individual achievements but by our collective efforts. Let's renew our commitment to excellence, remain relevant in a rapidly changing world, and above all, let us be resilient in the pursuit of our shared goals.

I have every confidence that together, we will rise to the challenges that lie ahead, seize the opportunities that present themselves, and chart a course towards a future that is brighter, bolder, and more promising than ever before.

Marc Nakamoto

Chair of the Board FY 2024-2025

*Regional Vice-President
Sodexo*

Follow us!



Facebook
@HonoluluJapaneseChamber



Instagram
@HJCC808

Corporate Members

As of June 2024

Chairman's Circle

Central Pacific Bank
Hawaiian Airlines
Island Insurance Co., Ltd.
Servco Pacific Inc.
Y. Hata & Co., Limited

President's Circle

ABC Stores
First Hawaiian Bank
Kyo-ya Management Company, Ltd.

Director's Circle

NEC Corporation of America

Executive Circle

Accuity LLP
Edward Enterprises, Inc.
Finance Factors, Ltd.
HEI
JTB Hawaii, Inc.
N&K CPAs, Inc.
Occidental Underwriters of Hawaii, Ltd.
Pacific Guardian Life Insurance Company, Ltd.

Corporate Circle

31AIKALIMA LLC
American Savings Bank
Atlas Insurance Agency
Englekirk LLC
FCH Enterprises, Inc.
Hawaii Energy / Leidos
Hawaii National Bank
Hawaiian Telcom
Kawailoa Development LLP
The SSA Group

Small Business Circle

Ace Auto Glass
AHL
Allied Builders Systems Inc.
Aloha Shoyu Company, Ltd.
ARC & Partner
Becker Communications, Inc.
Cetra Technology
ConnectWorks Group Hawaii
Dayforce

Join the HJCC!

Individual & Corporate Memberships
Available



Scan the QR code to learn more about becoming a member of the HJCC. Download a printable application form or register for membership online!

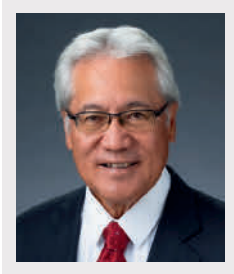
Flora-Dec Sales, Inc.
Greg Ryan & Associates LLLC
HMSA
Island Energy Services
MW Group, Ltd.
ProService Hawaii
Raymond James
Remedy Intelligent Staffing
Sodexo
Wilson Okamoto Corporation

LEADERSHIP

Executive Committee



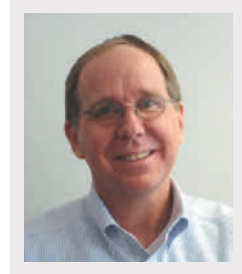
Chair of the Board
Marc Nakamoto
Regional Vice-President
Sodexo



President & CEO
Steven Teruya
President & CEO
Honolulu Japanese
Chamber of Commerce



Chair-Elect
Derek Kaneshiro
VP, ATM Product Manager
Central Pacific Bank



First Vice Chair
Michael McMurdo
CEO
Cetra Technology



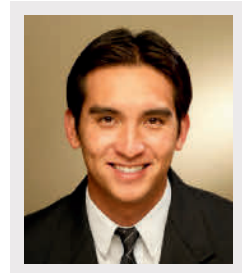
Vice Chair,
 Administration / Secretary
Peter Hamasaki
General Counsel
Foodland Super Market, Limited



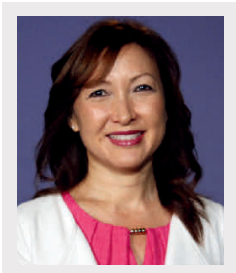
Vice Chair,
 Finance / Treasurer
Randi Tsushima
Sr. Vice President & Manager
American Savings Bank



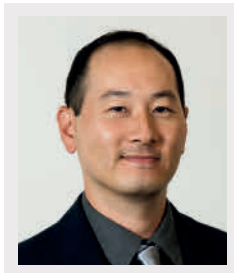
Vice Chair
Ina Chang
President
Aloha Data



Vice Chair
Casey Ching
Vice President - Corporate
Properties
Servco Pacific Inc.



Vice Chair
Kaiulani Shinsato
Director, Customer Energy
Resources Programs
Hawaiian Electric Company



Vice Chair
Brice Ueda
Attorney
Law Offices of Gary Y. Shigemura



Vice Chair
Dean Yoneshige
Broker Sales Manager
Pacific Guardian Life Insurance
Company, Ltd.



Immediate Past Chair
Kristi Inkinen Yanagihara
Owner
Remedy Intelligent Staffing

Board of Directors

Elected Directors (2 Year Term)



Chris Anjo
VP & Commercial Banking Officer
First Hawaiian Bank



Seiji Aspengren
CEO
Aloha Freight Forwarders



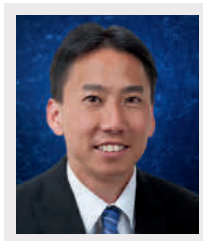
Tobie Egami
Proposal Manager, Marketing
HDCC



Craig Hirasaki
Owner / Creative Director
ConnectWorks Group Hawaii



Miki Ikeda
Vice President | Renewable
Energy Sector Manager
Bank of Hawaii



Blake Isobe
CPA, Managing Principal
N&K CPAs, Inc.



Ryan Kawamoto
Underwriting Supervisor
Island Insurance Co., Ltd.



Taylor Kiriara
SVP and Mapunapuna Commercial
Banking Center Manager
Central Pacific Bank



Tetsuya Kubo
President and CEO
JTB Hawaii, Inc.



Scott Miyasato
Senior Vice President, General
Counsel
Outrigger Hospitality Group



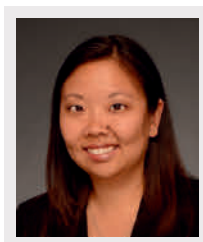
Sanford Morioka
President
Edward Enterprises, Inc.



Kurt Murao
Executive Vice President, General
Counsel, Chief Administrative
Officer and Corporate Secretary
HEI



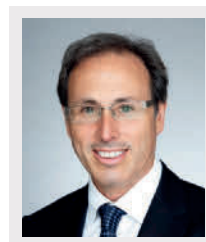
Shannon Okinaka
Executive Vice President & Chief
Financial Officer
Hawaiian Airlines



Jennifer Okubo Polido
Attorney
Law Office of Jennifer R. Okubo
Polido LLLC



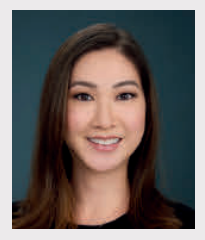
Joanna Oshiro
Managing Director
Deloitte & Touche LLP



Michael Saines
Partner, Vice President of
Development
Form Partners

Board of Directors

Elected Directors (2 Year Term) (continued)



Jenna Teruya
Asset Manager
Chopped Hawaii



Cathy Tong
Agent
Coldwell Banker Realty



Ronald Ushijima
President Emeritus
Honolulu Japanese
Chamber of Commerce



Neal Yokota
President & CEO
Stryker Weiner & Yokota
Public Relations, Inc.



Paul Yokota
President
FCH Enterprises

Board of Directors

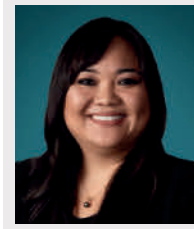
Appointed Directors (1 Year Term)



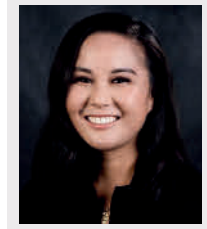
Kristin Alm
Director, Staffing and Operations
Remedy Intelligent Staffing



Benson Choo
EVP - Chief Information Officer
Finance Factors, Ltd.



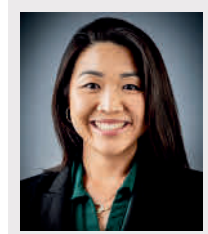
Kathryn Fujitani
VP, Marketing Manager
Hawaii National Bank



Heather Furutani
President
Honolulu Japanese Junior
Chamber of Commerce



Nozomi Heenan
Director of Operations
Mana Up



Kacie Hirotsu
Employee Benefits Consultant
PSH Insurance, Inc.



Chenise Kanemoto
Owner / Principal Attorney
Ziva Law



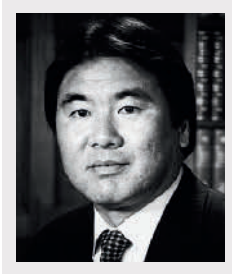
Rus Murakami
VP of Financial Development
The SSA Group

Board of Directors

Advisory Council



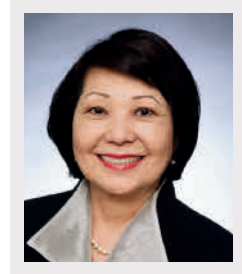
Walter Saito
Past Chair FY 1980
President Emeritus
Japanese Cultural Center of Hawaii



Wayne Miyao
Past Chair FY 1990
Chairman
Hiroshima-Hawaii
Sister City Committee



Arnold Hirotsu
Past Chair FY 2004
President
PSH Insurance, Inc.



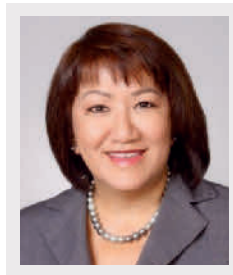
Kathryn Inkinen
Past Chair FY 2008
Founder (retired)
Inkinen Executive Search



Sidney Hamada
Past Chair FY 2010
President
Flora-Dec Sales, Inc.



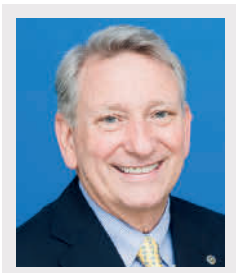
Gordon Kagawa
Past Chair FY 2014
Chairman & CEO
Occidental Underwriters
of Hawaii, Ltd.



Candice Naito
Past Chair FY 2015
Senior Vice President and
Oahu Region Manager (retired)
First Hawaiian Bank



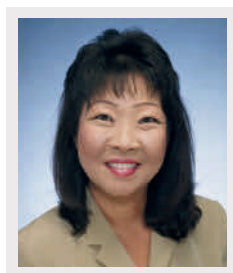
Tyler Tokioka
Past Chair FY 2016
Chair of the Board
Island Insurance Co., Ltd.



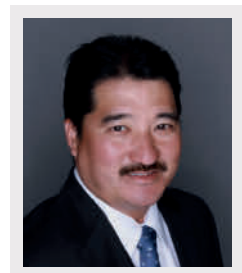
Dave Erdman
Past Chair FY 2017
Founder, CEO & President
PacRim Marketing Group, Inc.



Brian Nishida
Past Chair FY 2018
President & CEO
Step Stone Business Development



Melanie Okazaki
Past Chair FY 2019
Regional Marketing Manager
McDonald's Restaurants
of Hawaii



Jon Tsukamoto
Past Chair FY 2020
Vice President
Morgan Stanley Wealth
Management

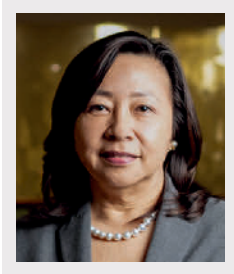
Board of Directors

Advisory Council (continued)



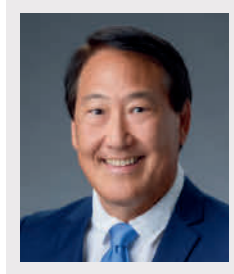
Jason Ito

Past Chair FY 2021
*Vice President of Administration,
 Labor and Community Relations
 Kyo-ya Management Company, Ltd.*



Rika Hirata

Past Chair FY 2022
*Vice President & Team Leader
 First Hawaiian Bank*



Myles Shibata

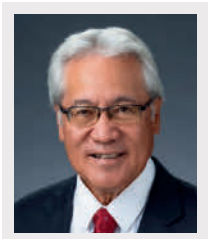
Past Chair FY 2023
*Principal
 MSS Consulting*



Kristi Inkinen Yanagihara

Past Chair FY 2024
*Owner
 Remedy Intelligent Staffing*

Staff



Steven Teruya

President & CEO



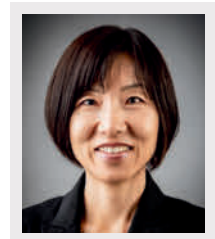
Merilyn Oda

Office Manager /
 Director of Accounting



Mai Shiomi

Special Events Manager /
 Digital Marketing Specialist



Miyuki Hansen

Program Manager &
 Japan Specialist

Past Chairs

1900-1902	Kenji Imanishi	1961	Ralph Honda	1998-1999	Wayne Ishihara
1903-1905	Kantaro Kishi	1962	Lawrence Kagawa	1999-2000	Joichi Saito
1905-1909	Danzaburo Yonekura	1963	Robert Sato	2000-2001	Robert Fujii
1909-1912	Wasuke Motoshige	1964	Jinshi Murashige	2001-2002	Howard Hanada
1913-1915	Danzaburo Yonekura	1965	Shinzaburo Sumida	2002-2003	Ronald Migita
1916	Masao Kawahara	1966-1967	Tsuyoshi Nishimoto	2003-2004	Arnold Hirotsu
1917	Yoichi Takakuwa	1968	Hideo Kawano	2004-2005	Gregg Mueller
1918	Kakuro Yamamoto	1969	George Fukunaga	2005-2006	Wayne Kirihara
1919	Seitaro Aoki	1970	William Tsuji	2006-2007	Glenn Nakamura
1920	Masao Kawahara	1971	Teruo Himoto	2007-2008	Kathryn Inkinen
1921-1923	Sanshichi Ozaki	1972- Jun 1973	Sidney Kosasa	2008-2009	Ronald Hayashi
1924	Ichiro Nakao	1973-1974	Hideo Kajikawa	2009-2010	Sidney Hamada
1925	Goro Nakayama	1974-1975	Robert Kaya	2010-2011	Wayne Kato
1926-1927	Ichiro Nakao	1975-1976	Fred Tamura	2011-2012	Christine Kubota
1928-1932	Kenkichi Iida	1976-1977	Rusty Kawamura	2012-2013	Scott Higa
1933	Daizo Sumida	1977-1978	Walter Tagawa	2013-2014	Gordon Kagawa
1934-Mar 1937	Seizo Yamamoto	1978-1979	Bert Tokairin	2014-2015	Candice Naito
Apr 1937-Dec 1937	Manzuchi Hashimoto	1979-1980	Walter Saito	2015-2016	Tyler Tokioka
1938	Daizo Sumida	1980-1981	Donald Doi	2016-2017	Dave Erdman
1939	Seizo Yamamoto	1981-1982	Norman Shigemura	2017-2018	Brian Nishida
1940	Koichi Iida	1982-1983	Lionel Tokioka	2018-2019	Melanie Okazaki
1941	Taichi Sato	1983-1984	Hugh O'Rilley	2019-2020	Jon Tsukamoto
1947	Daizo Sumida	1984-1985	Harold Yamanaka	2020-2021	Jason Ito
1948	Koichi Iida	1985-1986	Milton Yanagawa	2021-2022	Rika Hirata
1949	Hideichi Fukunaga	1986-1987	Russell Mezurashi	2022-2023	Myles Shibata
1950	Sadato Morifuji	1987-1988	Eigo Kudo	2023-2024	Kristi Inkinen Yanagihara
1951	Kumaji Furuya	1988-1989	Daniel Takehara		
1952	Tokuyoshi Awamura	1989-1990	Wayne Miyao		
1953	Masayuki Tokioka	1990-1991	Raymond Yamasaki		
1954	Motohiro Tanimura	1991-1992	Minoru Ueda		
1955	Shigeru Horita	1992-1993	Benjamin Fukumoto		
1956	Takeo Isoshima	1993-1994	Allan Totoki		
1957-Apr 1958	Mitsuo Tagawa	1994-1995	Mieko Otsuka		
May 1958-Dec 1958	Noboru Yamasaki	1995-1996	Gerald Ushijima		
1959	Masayuki Adachi	1996-1997	Garrett Serikawa		
1960	Katsuro Miho	1997-1998	Leonard Katsarsky		



Back Row: Sidney Hamada, Jason Ito, Brian Nishida, Tyler Tokioka, Myles Shibata, Gordon Kagawa, Wayne Kato, Ronald Hayashi and Arnold Hirotsu

Seated: Christine Kubota, Melanie Okazaki, Kristi Inkinen Yanagihara, Kathryn Inkinen and Rika Hirata

PROGRAMS

WHAT WE DO

Under the leadership and work of the committees, the HJCC provides its members with numerous events and programs each year. Here are some of the Chamber's activities:



Signature Events

Shinnen Enkai

Held in January, the Chamber's annual New Year's banquet, Shinnen Enkai, features a lively celebration with omamori sales, and a special pre-show entertainment.

The highlight of the evening is the kabuki play *Gonin Otoko*, with members re-enacting the scene on the Inase River from the *Shiranami Gonin Otoko*, kabuki play that premiered in Edo (Tokyo) in 1862. Five infamous *dorobos* (thieves) tell their life stories before being captured by the police.



Game Changers

Coordinated by the Small Business Advocacy Committee and Community Relations Committee, members and guests come to learn how businesses have changed their game plans in today's dynamic and challenging marketplace.



Chopsticks & Wine

Chopsticks & Wine is the Chamber's signature fundraiser which features delicious cuisine from Hawaii's finest chefs, paired with wines and spirits from a variety of distributors. The event attracts sellout crowds and is great for networking.

Inauguration & Generational Award Celebration

Each July, members and guests offer their congratulations to the incoming Chair of the Board and the newly elected Officers and Directors. The event also honors a member company with the Generational Award for their significant contributions to the growth and development of Hawaii's business and community sectors over two or more generations of ownership.



Samurai Classic Golf Tournament

The Samurai Classic Golf Tournament host a full field of members and guests alternating at member courses, Hawaii Prince Golf Course and the Pearl Country Club.

This annual tournament always guarantees a great day of friendly competition, networking and laughs.





PROGRAMS

Connecting B2B Events

Business Solutions Workshops

Coordinated by Small Business Advocacy Committee, members are provided with informational workshops on pertinent topics to help their businesses grow.



Fostering Friendship Events

Networking Events / Pau Hanas

Coordinated by the HJCC Membership Development Committee, new members are invited to networking events / pau hanas. The purpose of these gatherings is to welcome the new members and provide them an opportunity to meet other members in the Chamber. Networking events are held multiple times a year.



Mālama ka 'āina Events

Laulima - Community Partnership Program

The Laulima Program provides members with fellowship opportunities and leadership experience all while "giving back" to the community. Members are encouraged to recommend non-profit organizations in need of volunteers and manpower.



Leadership & Entrepreneurial Exchange Program

This program is designed to advance management and leadership skills with an entrepreneurial mindset. The cohorts will have the opportunity to engage directly with established business professional and build relationship with fellow LEEP Leaders and their Hiroshima counterparts.



Standing Committee Chairs



Budget & Finance

Joanna Oshiro

Monitors overall fiscal management, operations and planning of the Chamber to ensure that a sound financial posture is maintained. The committee provides guidance and assistance in the management and maintenance of an efficient accounting and financial reporting system of the Chamber. Also assures that member derive maximum benefits from Chamber services through budgeting and allocation of funds.



Communications and Marketing

Kathryn Fujitani

The committee was formed to develop the aspirational brand message for the HJCC. It also develops and maintains an internal communications plan which encourages member participation and results in greater awareness of the value of membership.



Government Affairs

Michael Saines

The committee maintains Chamber awareness and involvement in government affairs affecting business and the community in general. It establishes and coordinates the Chamber's positions on public or legislative issues that best reflect the interest of our members.



Japan Business Relations

Nozomi Heenan

Directs HJCC initiatives in business enhancement and expansion as part of Hawaii's overall economic development vision for the Pacific, with a focus on Japan. It plans seminars on topics of interest to the business community. Determines if business missions to Japan to encourage trade between Hawaii and Japan are appropriate.



Legal / HR / Governance

Chenise Kanemoto

Serves as legal counsel to the Chamber and establishes and maintains rules and procedures that provide the most efficient means by which the Chamber can fulfill its objectives. Maintains sound employment policies and staff procedures, to include fair employee compensation and benefit program.



Leadership & Entrepreneurial Exchange Program

Rika Hirata

The focus of this program is to create meaningful relationships between its participants that begin with friendships and an exchange of business values, solutions, ideas that build trust and open doors to cultivating new business relationships between Hawaii and Hiroshima. LEEP cohorts represent diverse industries including banking & finance, health, energy, education, insurance, retail, legal, small business owners and entrepreneurs.

Standing Committee Chairs

Standing Committee Chairs (continued)



Membership Development

Kacie Hirotsu

Increases the membership in the Chamber by broadening the membership base so that all business, professional and industrial sectors are represented to ensure financial stability of the Chamber. Develops strategies for new member recruitment and retention.



Small Business Advocacy

Taylor Kirihara

Implements policies, procedures, actions that support the development and growth of small business by providing a voice in the Chamber programs related to legislative and regulatory matters, and economic development. It plans special workshops focused on the needs and interests of small businesses, including the annual Business Solutions seminar and Game Changers event.



Ways & Means

Dean Yoneshige

Plans and carries out fundraising events to satisfy the fiscal requirements of HJCC. Annual events include Chopsticks & Wine and the Samurai Classic Golf Tournament.



Mentorship

Tobie Egami

This committee was formed to promote and enhance the HJCC woman member experience within the Chamber through meaningful programs and initiatives and to grow the number of women members within our organization. They plan / carry out events, seminars, forums, etc. in women's interests for all HJCC members.



Community Relations

Kristin Alm

The objective of this committee is to ensure that the HJCC through its many programs and events improves the community's understanding of the Chamber's mission.



Technology

Benson Choo

The Information Technology (IT) Committee will provide technical oversight & guidance in support of the Honolulu Japanese Chamber of Commerce's operations and activities.

GOING ABOVE & BEYOND

Outstanding Member of the Year

Each fiscal year, a selected individual(s) of the Honolulu Japanese Chamber of Commerce is designated by the Chair of the Board of Directors to be the "HJCC Outstanding Member(s) of the Year" for significant contributions to the Chamber.



Dean Yoneshige

Brokerage Sales Manager

Pacific Guardian Life Insurance Company, Ltd.

Member Since 2020

KUROKO Award

Kuroko in Japanese describes the kabuki stage people who are dressed in black and assist the performers with stage props and dress. They are behind the scenes and do not stand out for the audience.

Every year the selection is done by the Chamber staff, who can readily identify these members.

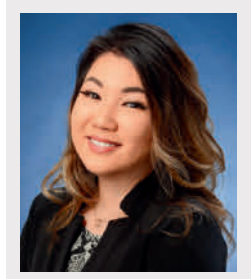


Brandon Miyagi

*Third-Party Program Senior
Professional*

Hawaii State Federal Credit Union

Member Since 2016



Jenna Nakagawa

Mortgage Loan Officer

Primary Residential Mortgage, Inc.

Member Since 2022

Past Outstanding Members

1980	Tatsuko Hino	2006	Leo Asuncion, Jr. Ronald Hayashi Jodi Ito
1981	Ronald Ushijima	2007	Christine Kubota Sammy Li
1982	Teruo Himoto	2008	Richard Matsui Tyler Tokioka Tetsushi Uno
1983	Donald Doi	2009	Roy Ishihara Takae Okuma-Johnson
1984	Walter Tagawa	2010	Roy Amemiya, Jr. Scott Higa Arnold Hirotsu Michael Nomura Lynette Lo Tom
1985	Walter Saito	2011	Mark Ibara
1986	Minoru Ueda	2012	Brian Nishida Terry Noyama
1987	Dean Matsushima	2013	Rika Hirata Jon Tsukamoto
1988	Yoshiharu Satoh	2014	Davis Higa
1989	Buster Komori	2015	Patti Fukada David Yamashita
1990	Leonard Katsarsky Glenn Nakamura	2016	Jodi Nozoe Chang
1991	Paul Yamashige	2017	Steven Teruya
1992	Garrett Serikawa	2018	Jason Ito Myles Shibata
1993	Wayne Ishihara	2019	Rick Mishima
1994	Howard Hanada David Seya	2020	Derek Kaneshiro
1995	Rene Mansho Tony Masamitsu	2021	Peter Hamasaki Jill Kuramoto
1996	Thomas Sakamoto	2022	Marc Nakamoto
1997	Melanie Hashimura	2023	Blake Isobe Michael McMurdo
1998	Daniel Takehara		
1999	Natsuko Lambert		
2000	Wayne Miyao Robert Nagao		
2001	Joseph Sailer		
2002	Albert Kobayashi Robert Kuniyuki Kiyoshi Ohbe Yoshiyuki Otoshi		
2003	Ralph Honda Jodi Nozoe Stanley Yamamoto		
2004	Fred Morinaka		
2005	Emi Anamizu Sidney Hamada		

Generational Award Honoree

The Honolulu Japanese Chamber of Commerce established the Generational Award in 2005 to recognize local businesses that have made a significant contribution to the growth and development of Hawaii's business and community sectors over two or more generations of ownership. Award recipients are honored at the Chamber's Inauguration and Generational Award Celebration.

Generational Award Celebration events and the presentation of the 2020 ~ 2022 Generational Awards were cancelled due to the COVID-19 pandemic.



Aloha Shoyu Company

"In 1946, a small shoyu manufacturing plant was established in Kalihi by five local Japanese families. Aloha Shoyu Company has survived through competition to become one of today's market leaders in Soy Sauce sales in Hawaii.

With a sound reputation on the islands, Aloha Shoyu has taken strategic strides to become more domestically and globally recognized. With warehouses now in California and Las Vegas, the company — for the past 13-plus years — has begun to expand its reach to mainland states and internationally, introducing its signature products to Japan, Korea and Mexico.

Approaching the fourth generational wave of leadership in the company, Aloha Shoyu is passing the test of time. Along with each and every employee and the decades of local, supportive customers, they credit their family-oriented approach to business as the intangibles for their success.

As the products and facilities of Aloha Shoyu have grown significantly since the early days of the 1940s, a testament to their expanding reach is the local, traditional values that have remained unwavering, helping a once simple soy sauce company become a global enterprise.



Past Generational Award Honorees

2005	Iida's Store Iida Family
2006	Robert M. Kaya Builders, Inc. Kaya and Higa Family
2007	ABC Stores Kosasa Family
2008	Hawktree International Takaki Family
2009	Tony Hawaii Automotive Group, Ltd. Masamitsu Family
2010	Occidental Underwriters of Hawaii, Ltd. Kagawa Family
2011	Y. Hata & Co., Ltd. Hata Family
2012	Iolani Sportswear Ltd. Kawakami Family
2013	S & M Sakamoto, Inc. Sakamoto Family
2014	Standard Capital Group, Inc. Totoki Family
2015	Aloha Tofu Factory, Inc. Uyehara Family
2016	Conrad Enterprises, Inc. Sasaki Family
2017	M. Harada Enterprises, Inc. Harada Family
2018	Beretania Florist Nakamoto Family
2019	Servco Pacific Inc.
2023	Hawaii National Bank Luke Family

A JOURNEY THROUGH HISTORY

Milestones

Founded in 1900, the Honolulu Japanese Chamber of Commerce (HJCC) is relevant today as it was when it was started. We are proud of the accomplishments we have been able to achieve through the efforts of our dedicated members.

December 1899



The heavily populated Chinatown area in downtown Honolulu is razed in an attempt to curb rats carrying the bubonic plague.

March 12, 1900

To assist Chinatown fire victims, the Honolulu Nippon-Jin Shonin Doshi Kai [Honolulu Japanese Merchants Association] is established.

1912

The Honolulu Nippon-Jin Shonin Doshi Kai changes its name to the Honolulu Japanese Chamber of Commerce [HJCC]. Its main goal is to advocate trade between Japan and Hawaii.



HJCC Founding Members

Kenji Imanishi, Kentaro Kishi, Wasuke Motoshige, Masao Kawahara

1920

The Japanese Merchant's Association is founded.

January 5, 1938

The first performance of the Shiranami Gonin Otoko at the HJCC's New Year's celebration.



First Shiranami Gonin Otoko Cast (Jan. 5, 1938)

(from left): Masaji Marumoto, Sawajiro Ozaki, Shujiro Takakuwa, Kinzo Sayegusa, Manzuchi Hashimoto, Daizo Sumida

1939

The Japanese Merchants' Association merges into the Honolulu Japanese Chamber of Commerce.

December 7, 1941

The United States enters World War II. All Japanese residents are labeled "enemy aliens". Assets are frozen, key Japanese leaders are arrested and are banned from meeting. In April 1942, HJCC agrees to stop all HJCC meetings.

March 1947

A general meeting is held at the YBA [Young Buddhist Association] Hall to restart the HJCC.

1949



The Honolulu Japanese Junior Chamber of Commerce is established with 43 charter members.

August 21, 1959

President Eisenhower signed the official proclamation admitting Hawaii as the 50th state.

Milestones

Milestones (continued)

1960 The HJCC Cultural Center is built. The building serves as its headquarters for the chamber. The Cultural Hall and Tea Ceremony House are open to the community for both public and private events.

1968 The HJCC is made an associate member of the Chamber of Commerce of Hawaii.

June 1975 The first Teru-Yaki Chicken fundraiser is held named after 1971 Chair of the Board, Teruo "Teru" Himoto.



The Original HJCC Building

May 1978



The Samurai Golf Classic holds its first invitational Golf Tournament. at the Pearl Country Club. Underwriters for the event are Hawaii National Bank, Love's Bakery, Aloha Airlines, GTS Distributors, Continental Airlines and Slipper House.

September 1978 The first HJCC Art Show is created as a community service project and is named "Young Japanese Art Show" and is later changed to "Young Artist Art Show" to assist aspiring artists with emerging talent to display their art. The last art show was held in 2018 after a 40-year run.

May 1981 HJCC established a sister chamber agreement with the Hiroshima Chamber of Commerce & Industry.

May 1981 HJCC establishes a joint affiliation agreement with the Fukui Chamber of Commerce & Industry,

1988 The Japanese Cultural Center of Hawaii is created and the HJCC donates its facility and property to the JCCH as an act of commitment.

July 1990 Groundbreaking for phase 1 is held for a new facility including offices, meeting rooms and a tea house.

August 1991 Phase 1 is completed.

July 1992 The original headquarters is demolished making way for Phase 2 that will house a banquet hall, parking structure, historical gallery and martial arts dojo.



Japanese Cultural Center of Hawaii

May 1994 Construction is completed for Phase 2. It is dedicated in traditional Shinto, Buddhist and Hawaiian blessings.

Milestones

Milestones (continued)

2001 The HJCC Charitable Corporation, a 501 c(3) is established. A scholarship fund is established in partnership with the Hawaii Community Foundation that provides two scholarships annually to perpetuity.

2002



In observance of the HJCC's 100th anniversary, the Torii Gate is constructed. The gate, donated and built by the Hiroshima Chamber of Commerce & Industry and the Hiroshima Prefecture & City Government, is situated on the corner of South King and Beretania Streets and symbolizes the friendship and goodwill between Hiroshima and Hawaii. It is later donated to the City & County of Honolulu.

July 2002

The first annual Wine Tasting & Silent Auction is held at the Bishop Museum. The event would later be renamed Chopsticks & Wine, the HJCC premier annual fundraising event.



2009 - 2010

The HJCC celebrates its 110th Anniversary.

August 2010

The inaugural Game Changers event is sponsored by the HJCC's Small Business Advocacy Committee. It is a gathering, focused on prominent individuals in the community who have made unique impact in their lives personally and in our community.

2011



The HJCC is actively involved with the Aloha for Japan as a Steering Committee member to help with tsunami and earthquake relief efforts in Japan and serves as the collection point for all donations.

2014

The HJCC receives a certificate of congratulations from the State Legislature for its outstanding and meaningful work benefiting Japan-Hawaii relations.

2017

The HJCC creates the Hawaii-Hiroshima Emerging Young Business Leaders Program [EYBLP], tied to the 20th Sister-State Anniversary between Hawaii and Hiroshima. The program focus on leadership development through week-long programs held in both Honolulu and Hiroshima.



Hawaii-Hiroshima Emerging Young Business Leaders Program Cohort 3

Milestones

Milestones (continued)

March 2020



The HJCC celebrates its 120th Anniversary during the fiscal year 2020-2021.

March 2020

The World Health Organization declares a global pandemic known as the coronavirus pandemic also known as COVID-19.

HJCC in-person activities are severely curtailed and must quickly adapt to remote Zoom meetings, virtual events as staff work remotely from home.

August 2022

The State of Hawaii and the HJCC celebrate a belated 20th Anniversary of the sister-state agreement with the Hiroshima Prefecture in Hiroshima, Japan. This visit marked the opening of Japan to outside travelers since the beginning of the pandemic.



Honolulu Governor David Ige and wife Dawn Amano-Ige and Hiroshima Governor Hidehiko Yuzaki in Hiroshima, Japan

April 2023



Hiroshima Chamber of Commerce and Industry delegates visit Moilili Torii Gate

The HJCC celebrates a belated 40th Anniversary Celebration with sister-chamber, the Hiroshima Chamber of Commerce & Industry while the Torii Gate undergoes new painting.

April 2024

The HJCC celebrates its 20th Chopsticks & Wine.





HONOLULU JAPANESE CHAMBER OF COMMERCE
CHARITABLE CORPORATION

Honolulu Japanese Chamber of Commerce Charitable Corporation

501c(3) Non Profit

Historical Milestones of the Charitable Corporation

January 29, 2001: Honolulu Japanese Chamber of Commerce Charitable (HJCC) is incorporated in the state of Hawaii as a Section 501(c)(3) corporation of the IRS Code and organized exclusively for charitable, scientific, literary, religious or educational purposes.

June 30, 2005: Board of Directors approves in concept establishing a Leadership Training Program through collaboration with the University of Hawaii Community Colleges; Japan America Institute of Management Science (JAIMS), and other public institutions; approves partnering with JAIMS in their Global Management Training Service program by offering partial scholarships.

2008: The HJCC Charitable Corporation officially adopts the Torii Gate located at the Triangle Park in Moiliili under the City and County of Honolulu's Adopt a Sculpture program for its care and maintenance.

2012: The Board establishes a Community Fund to respond to non-profit organizations in need of financial assistance.

April 11, 2016: HJCC Charitable Corp. Board of Directors proceed with establishing a Scholarship Fund with the Hawaii Community Foundation with an initial amount of \$25,000. The Scholarship Fund will also be set up to receive cash, marketable securities and insurance policies.

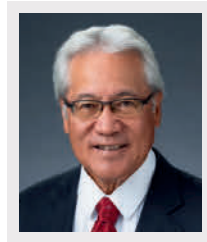
HJCC Charitable Corporation Board of Directors



Chair of the Board
Tyler Tokioka
*Honolulu Japanese Chamber of
Commerce Charitable Corporation
Chair of the Board
Island Insurance*



Vice Chair
Ronald Ushijima
*President Emeritus
Honolulu Japanese
Chamber of Commerce*



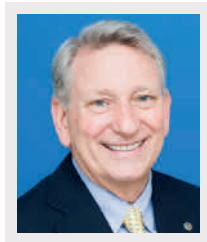
President / Secretary /
Treasurer
Steven Teruya
*President & CEO
Honolulu Japanese
Chamber of Commerce*



HJCC Chair
Marc Nakamoto
*Regional Vice-President
Sodexo*



HJCC Immediate Past Chair
Kristi Inkinen Yanagihara
*Owner
Remedy Intelligent Staffing*



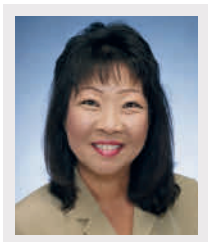
Director
Dave Erdman
*Founder, CEO & President
PacRim Marketing Group, Inc.*



Director
Howard Hanada
*Partner (Retired)
Grant Thornton LLP*



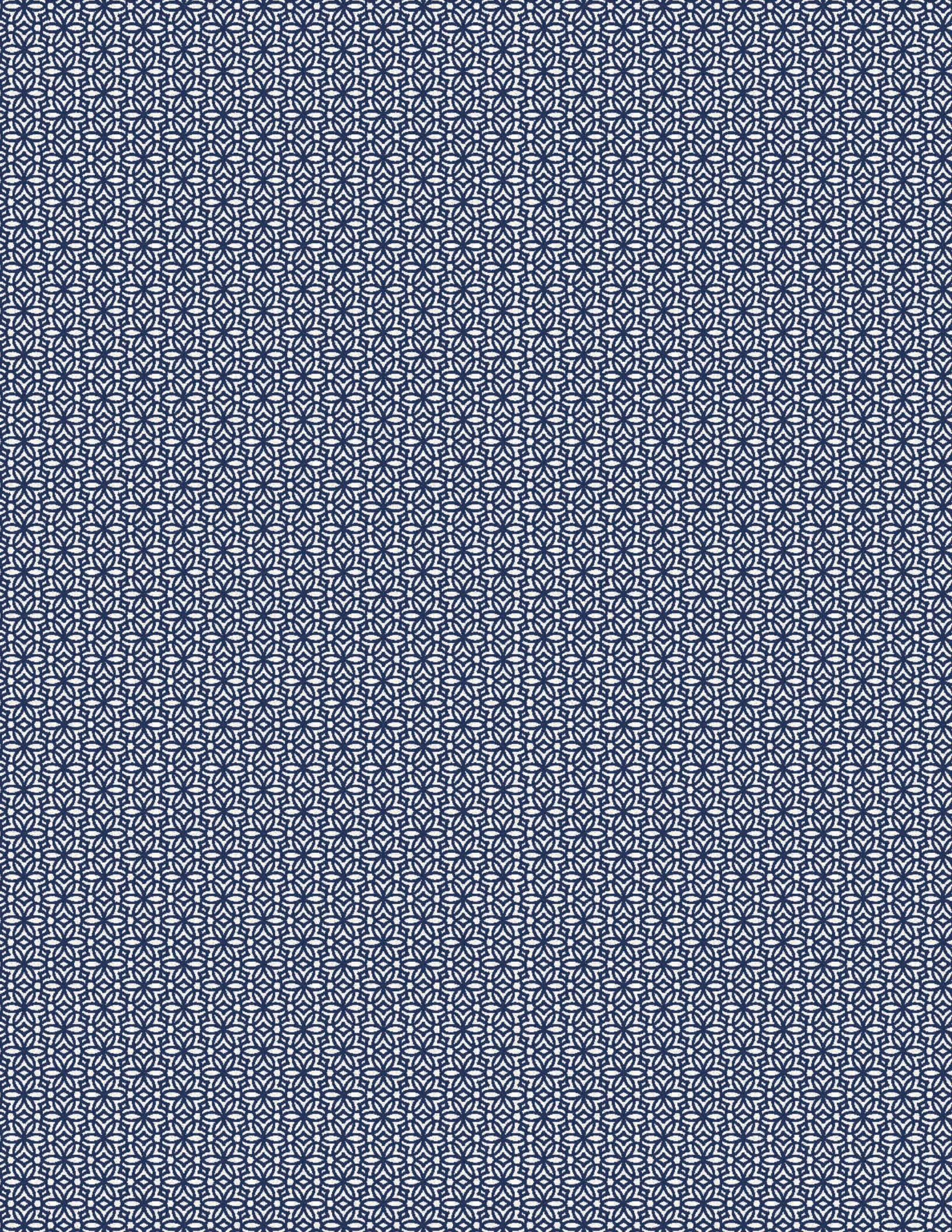
Director
Brian Nishida
*President & CEO
Step Stone Business
Development*



Director
Melanie Okazaki
*Regional Marketing Manager
McDonald's Restaurants
of Hawaii*



Director
Gerald Ushijima
*Principal
Gerald Y. Ushijima, CPA*



protecting local people.



At Island Insurance, safeguarding Hawaii's companies and families is not just our business. It's our steadfast commitment.

Distinguished as the only locally-owned property and casualty (P&C) insurer that's also nationally-ranked in the Ward Group's P&C Top 50, Island understands Hawaii like no other and stands by our customers when they need us most.



BUSINESS | AUTO | HOME

Contact Your Independent Agent
(808) 643-4000 • Islandinsurance.com